



Construction for stand-alone awnings

# Duofix

The strong and robust weinor **Duofix** frame system is suitable for all applications wherever a large area needs to be covered. The back to back installation is the ideal solution for weather protection where a free standing solution is needed.

There is a choice of 3 different awning options for the Duofix. In all cases they are fitted either side of the framework resulting in a back to back free standing double awning.

**Opal Design II**

Premium cassette awning in timeless classic design to provide sun protection for large areas

**Topas with roof**

Entry level awning that provides exceptional value for money. Ideal for commercial applications

**Plaza Viva**

Pergola awning with fixed posts to the front for additional stability. Can cover a very large area and provides additional weather protection

**Screw-in base:**

Made from stable galvanized and powder coated steel

# Duofix Highlights

05

**Integrated lighting:**

If the Opal Design II LED is opted for, integrated LED spotlights ensure even lighting under the roof.

**Robust brackets:**

Ensure ideal fixing positions and can be moved axially

**Upgrades:**

Optional fitting of accessories, e.g. Tempura heating system or LED bars



# Duofix Technology

Modular product upgrade for the products			
	Opal Design II/LED	Topas with roof	Plaza Viva
Technology			
Max. projection	350 cm	350 cm	500 cm
Max. width	650 cm	650 cm	600 cm
Multi-section unit max. width	1,300 cm (multi-section units possible on request)		1,000 cm x 500 cm or 1,200 cm x 400 cm
Total height of system	approx. 324 cm	approx. 323 cm	approx. 323 cm
Height (bottom edge of crossbeam)	approx. 300 cm	approx. 300 cm	approx. 300 cm
Construction head clearance height	should be at least 190 cm at the front		
Mounting alternatives	mounting on free-standing areas		
LED lighting	Opal Design II LED	<input type="radio"/>	Plaza Viva LED
Fixing	selectively screw-in base or slab base for mounting on floor		
Max. shadeable area with 1-part constructions	45,5 m² (22,75 m² per side)		60 m² (30 m² per side)
Accessories			
Tempura heating system	<input type="radio"/>	<input type="radio"/>	<input type="radio"/>
Light options	<input type="radio"/>	<input type="radio"/>	<input type="radio"/>
Controls			
Radio control	<input type="radio"/>	<input type="radio"/>	<input type="radio"/>
No remote	<input checked="" type="radio"/>	<input checked="" type="radio"/>	<input checked="" type="radio"/>

● standard   ○ optional   — unavailable

## Technical features

- The height of the Duofix (with Opal Design II/LED and Topas with roof) is calculated on the basis of a 14° pitch and a clearance height of 190 cm
- Topas with roof and Opal Design II/LED can only be fitted to the Duofix construction with a max. projection of 350 cm, Plaza Viva with up to 500 cm and without the Valance Plus option
- The unit sizes must be the same on both sides and extended evenly

# Duofix Assistance

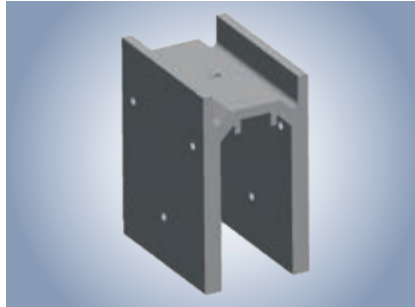
	Material	Surface treatment	Quality features	Benefits
Screw-in base	ST 37 construction steel	splash-proof for outside and inside use	surface permanently scratch and weather-proof	permanently protected against corrosion, attractive look
Slab base	ST 37 construction steel	pre-treated with a chrome-free coating and powder coated	surface permanently scratch and weather-proof	the dismantlable slab base provides solidity and flexibility, does not require a permit according to building law as it is not permanently fixed to the ground
Universal rail with cover cap for Tempura heating system	extruded aluminium	pre-treated with a chrome-free coating and powder coated	surface permanently scratch and weather-proof	pre-equipped on Duofix, easy to install several Tempuras
Wall bracket 85/150 mm	extruded aluminium	splash-proof for outside and inside use	surface permanently scratch and weather-proof	easy to move the brackets into the required position
Wall bracket (wall connection)	extruded aluminium	splash-proof for outside and inside use	surface permanently scratch and weather-proof	duo fix connected on both sides of the building, permanently protected against corrosion, attractive look
Safety shield for Topas with roof	extruded aluminium	pre-treated with a chrome-free coating and powder coated	surface permanently scratch and weather-proof	guarantees protection against rain and the inclusion of electrics (BiConnect components)
Safety shield for Opal Design II/LED	extruded aluminium	pre-treated with a chrome-free coating and powder coated	surface permanently scratch and weather-proof	guarantees protection against rain and the attachment of electrics (BiConnect components)
Tempura heating system	corrosion-resistant materials	pre-treated with a chrome-free coating and powder coated	splash-proof for outside and inside use	sophisticated quality, precise and weather resistant down to the very last detail, identical components make servicing easier
Light bar	corrosion-resistant materials	pre-treated with a chrome-free coating and powder coated	surface permanently scratch- and weather-proof	the weinor LED light bars and LED Design can be ordered with sun protection, details in the Accessories section
Post	ST 37 construction steel	hot-dip galvanized and powder coated	surface permanently scratch and weather-proof	permanently protected against corrosion, attractive look
Crossbeam	extruded aluminium	pre-treated with a chrome-free coating and powder coated	surface permanently scratch and weather-proof	flexible attachment of all fixing elements
Screw-on bracket	extruded aluminium	pre-treated with a chrome-free coating and powder coated	surface permanently scratch and weather-proof	universal attachment of brackets for the Topas with roof folding arm awning and Opal Design II/LED
Screws	stainless steel		rustproof	no rust, no significant wear

# Duofix Fixings

## Brackets



Duofix 85 bracket for Topas with roof



Duofix 180 bracket for Opal Design II



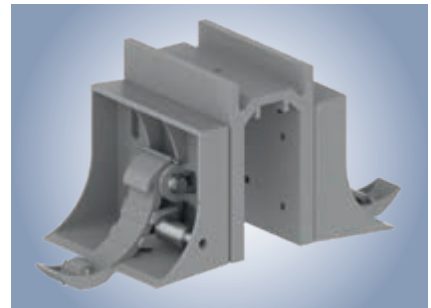
Duofix 180 bracket for Plaza Viva



Topas wall brackets on 85 bracket



Opal Design II wall brackets on 180 brackets



Plaza Viva wall brackets on 180 brackets

## Fixing alternatives for Topas with roof, Opal Design II and Plaza Viva

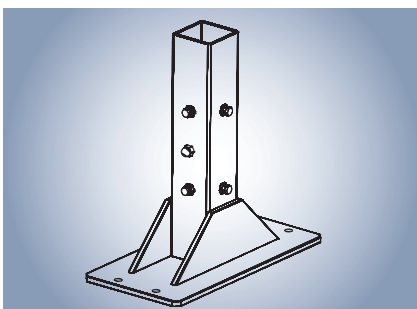


Duofix with Opal Design II

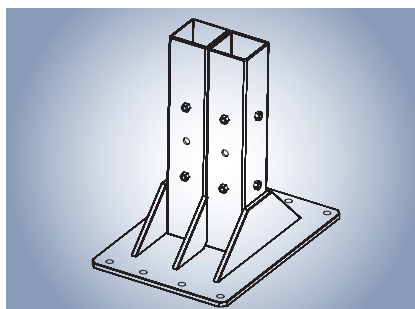
Different retainers ensure the easy mounting of awning products. A roof rounds off the look.



Duofix with Plaza Viva



Screw-in base (standard)  
(galvanized and powder coated)

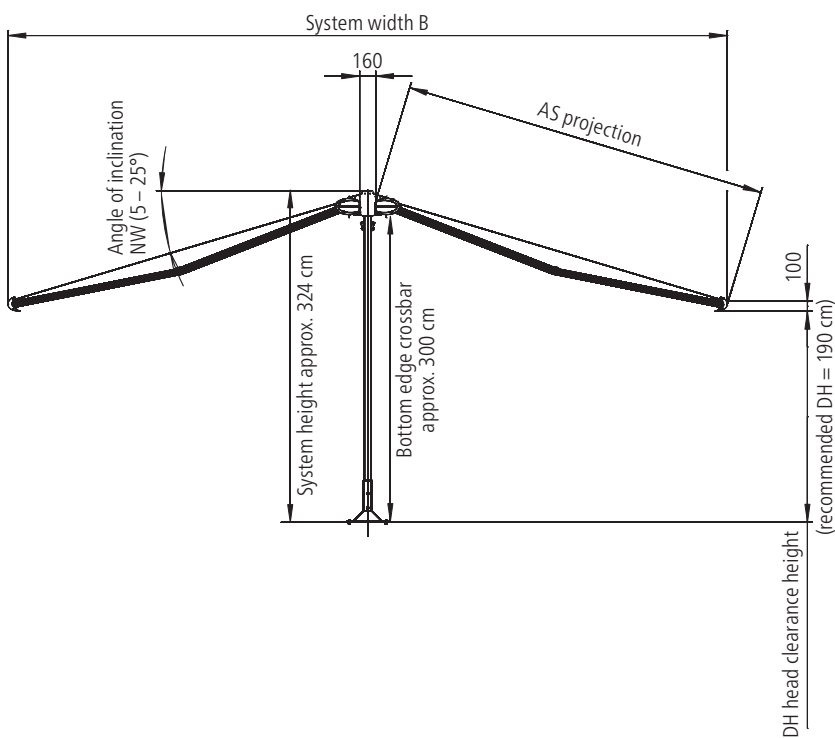
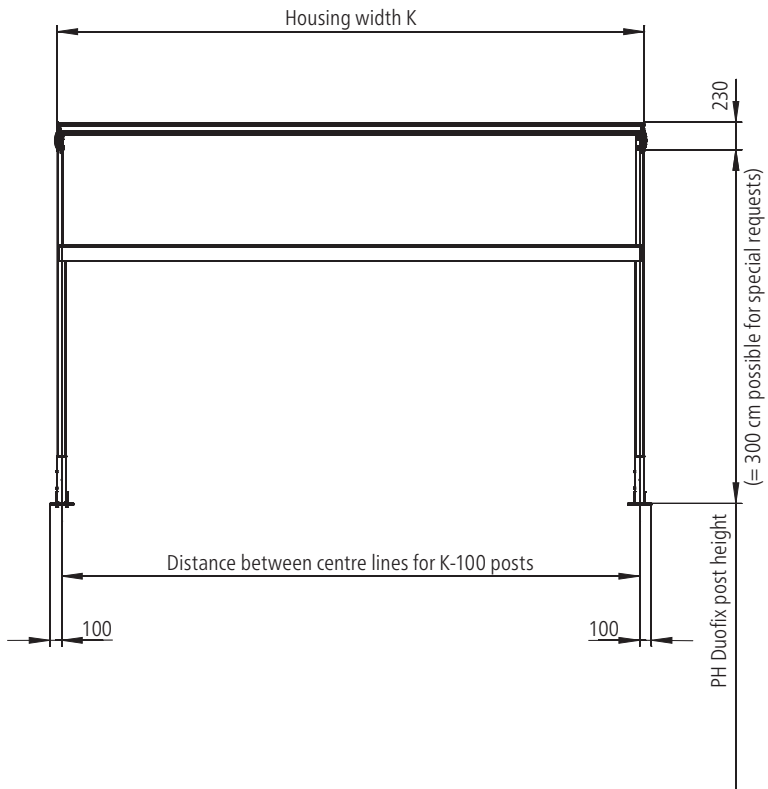


Multi-section unit screw-in base  
(galvanized and powder coated)

Screw-in base for mounting to the foundation or optionally with mobile slab base for different locations.

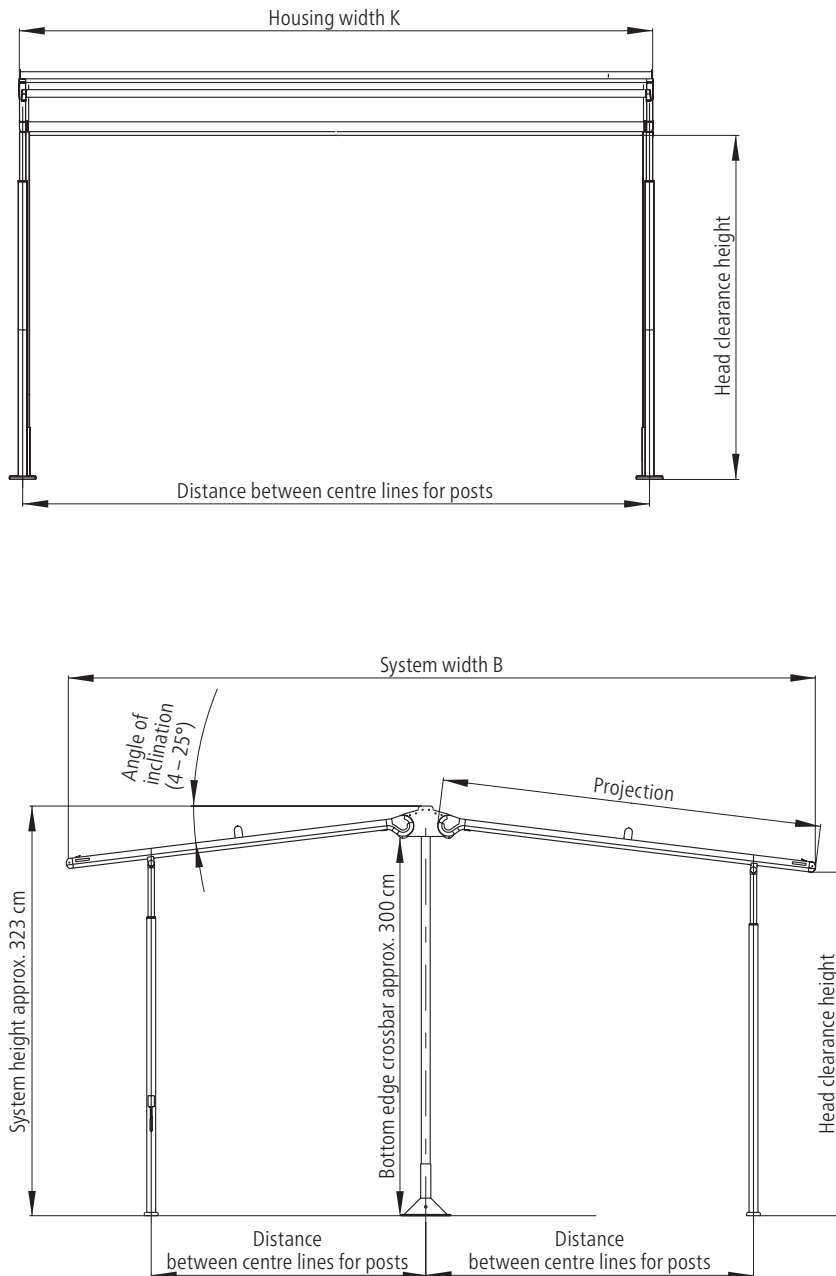
# Duofix Planning

## View of Duofix with Opal Design II



## Duofix Planning

### View of Duofix with Plaza Viva



Rain class 2 is met:

- with Plaza Viva with fixed posts from a pitch of 14°
- with Plaza Viva with telescopic posts from a pitch of 4° with fully lowered post

## Duofix Planning

### Slab base framework assembly



Duofix can be ordered optionally with slab bases.

Standard 50 x 50 x 5 cm patio slabs can be purchased from the local construction specialised trade to weigh them down.

**Possible use of Duofix without storm protection when closed with the use of a slab base with a total weight of 680 kg**

System width in cm	Wind zone + territory category						
	WZ 2, MP B	WZ 2, MP K	WZ 3, MP B	WZ 3, MP K	WZ 4, MP B	WZ 4, MP K	WZ 4, GK I
650	●	–	–	–	–	–	–
600	●	●	–	–	–	–	–
550	●	●	●	–	–	–	–
500	●	●	●	–	–	–	–

**Legend:**

WZ = wind zone acc. to DIN 1055-4

MP B = inland mixed profile acc. to DIN 1055-4, table B3 (covers all other territory categories)

MP K = coast mixed profile acc. to DIN 1055-4, table B3 (coastline 5 km, Baltic Sea islands)

GK I = territory category I acc. to DIN 1055-4, table B1 (North Sea islands)

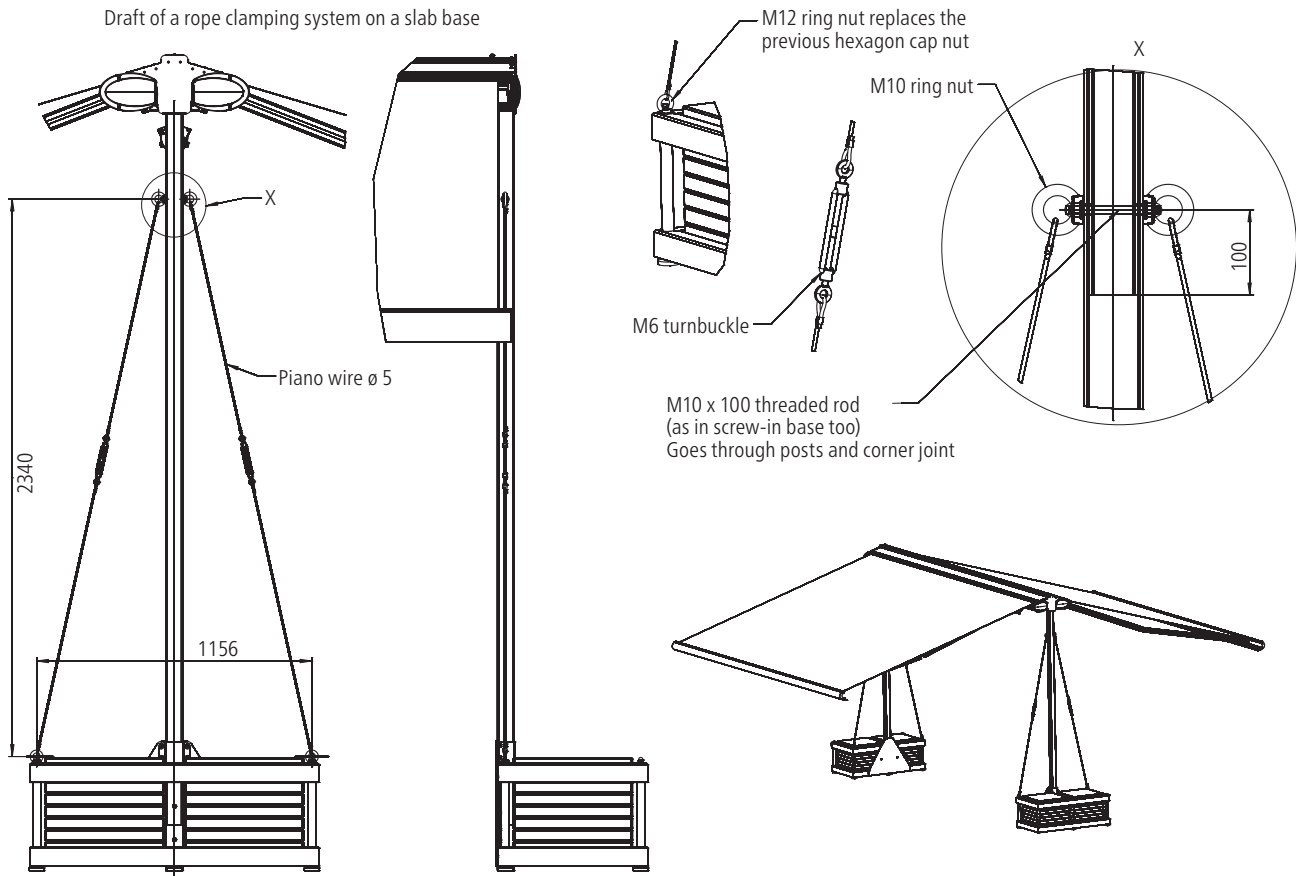
(Values)= required counterweight in kg

**Recommendation for service description**

When using the constructions in coastal areas and on the North Sea islands, the constructions must be taken down from wind strength 11 or more or secured additionally at your own discretion, unless it is an area not protected from the wind.

## Duofix Planning

### Storm protection using a rope clamping system



Possible use of Duofix with storm protection when closed with the use of a slab base with a total weight of 680 kg

System width in cm	Wind zone + territory category						
	WZ 2, MP B	WZ 2, MP K	WZ 3, MP B	WZ 3, MP K	WZ 4, MP B	WZ 4, MP K	WZ 4, GK I
650	●	●	●	●	●	—	—
600	●	●	●	●	●	—	—
550	●	●	●	●	●	—	—
500	●	●	●	●	●	●	—

#### Legend:

WZ = wind zone acc. to DIN 1055-4

MP B = inland mixed profile acc. to DIN 1055-4, table B3 (covers all other territory categories)

MP K = coast mixed profile acc. to DIN 1055-4, table B3 (coastline 5 km, Baltic Sea islands)

GK I = territory category I acc. to DIN 1055-4, table B1 (North Sea islands)

(Values)= required counterweight in kg

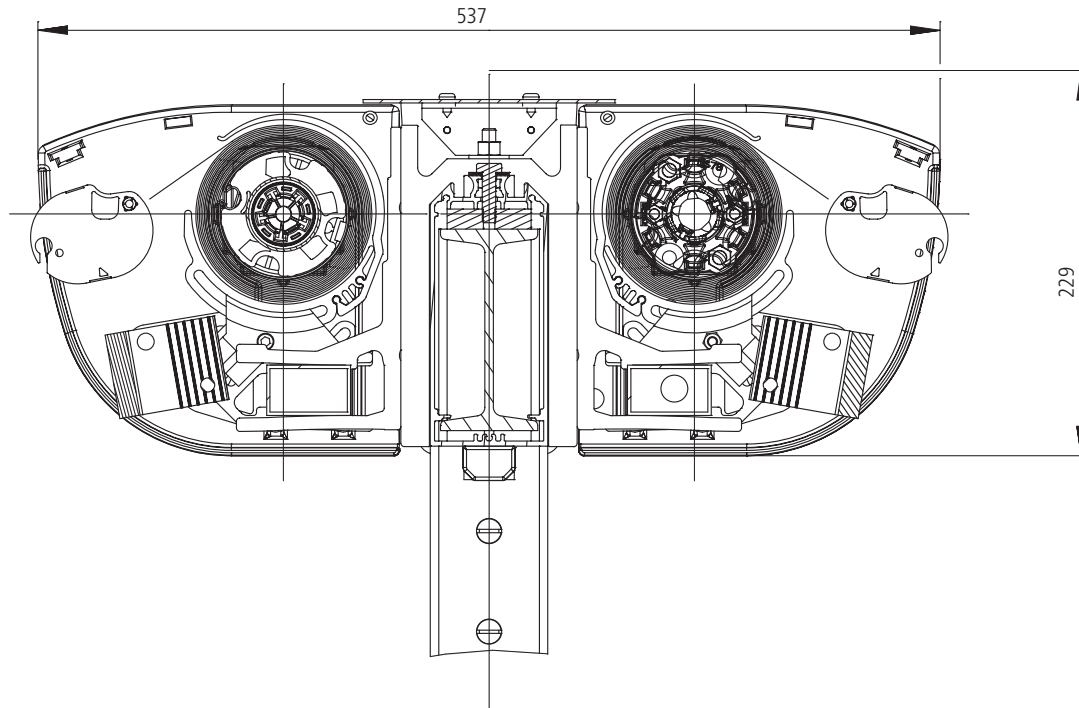
#### Recommendation for service description:

When using the constructions in coastal areas and on the North Sea islands, the constructions must be taken down from wind strength 11 or more or secured additionally at your own discretion, unless it is an area not protected from the wind.

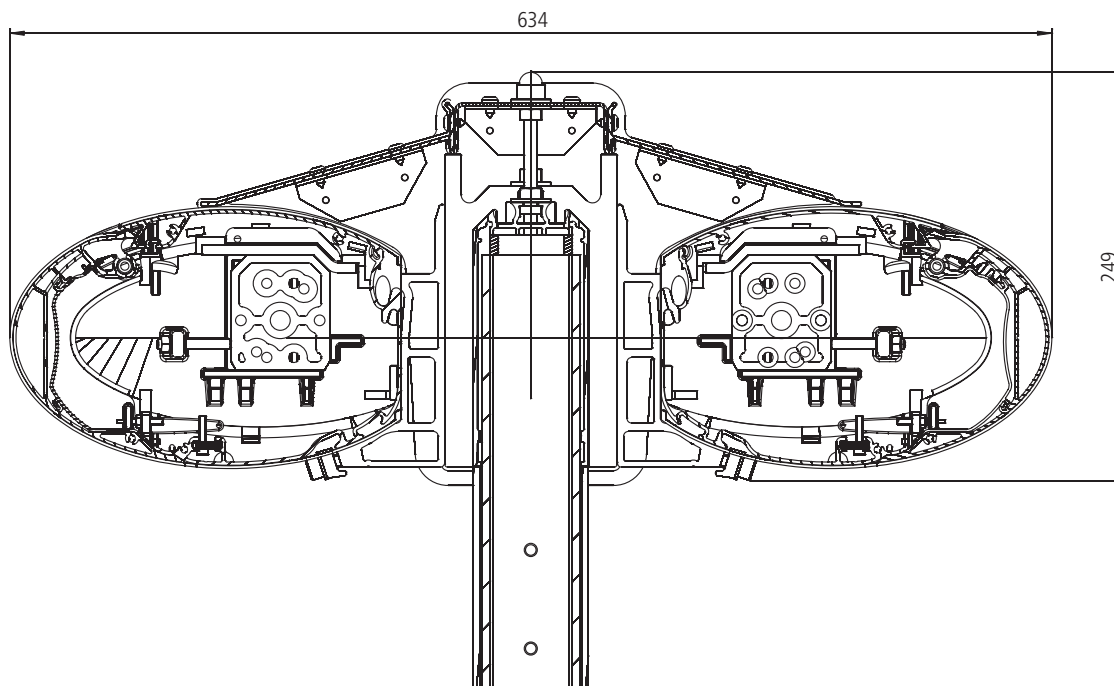
## Duofix Planning

### Cross-sections

Sectional drawing of Duofix with Topas with roof – not to scale



Sectional drawing of Duofix with Opal Design II – not to scale



**Note:**

Topas with roof and Opal Design II/LED can only be fitted to the Duofix without the Valance Plus option.

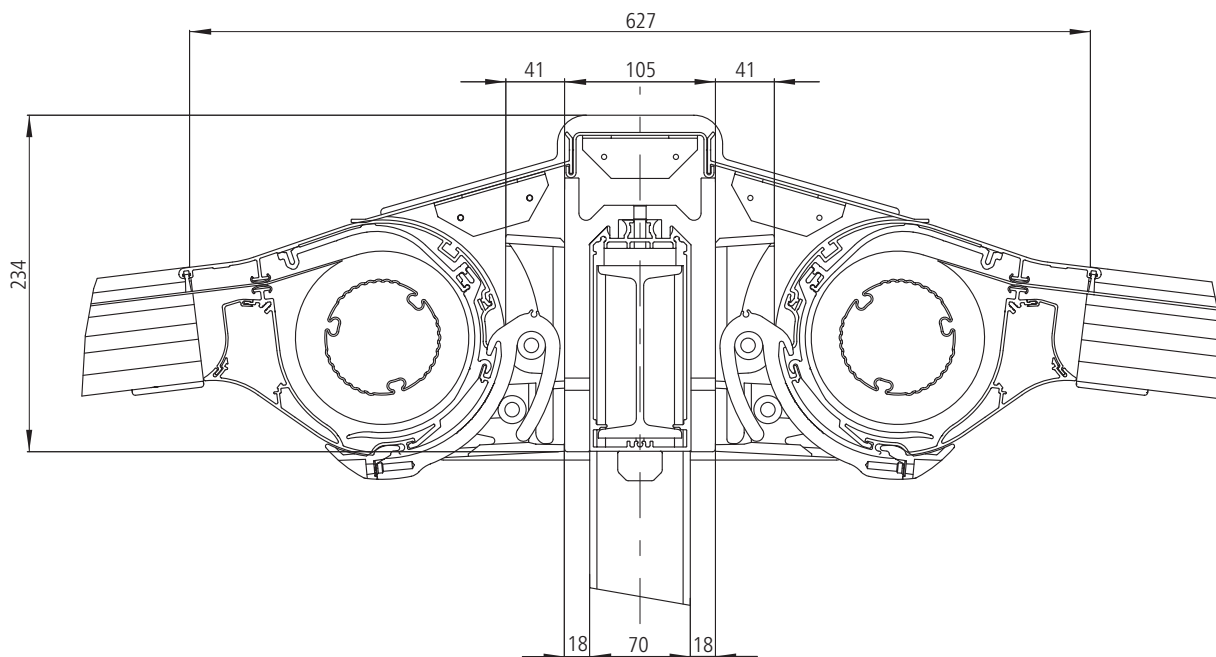
**Note:**

System must be the same size on both sides.

## Duofix Planning

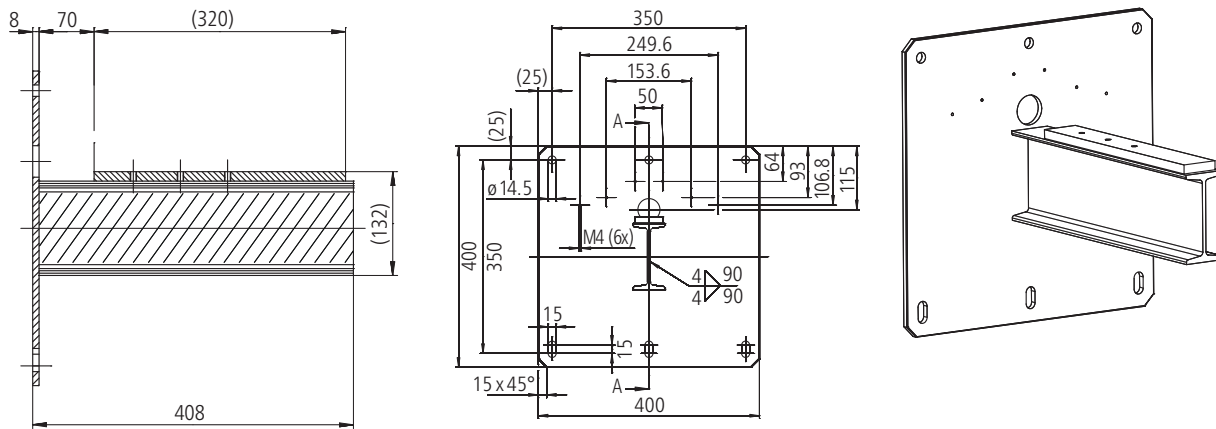
### Cross-sections

Sectional drawing of Duofix with Plaza Viva – not to scale

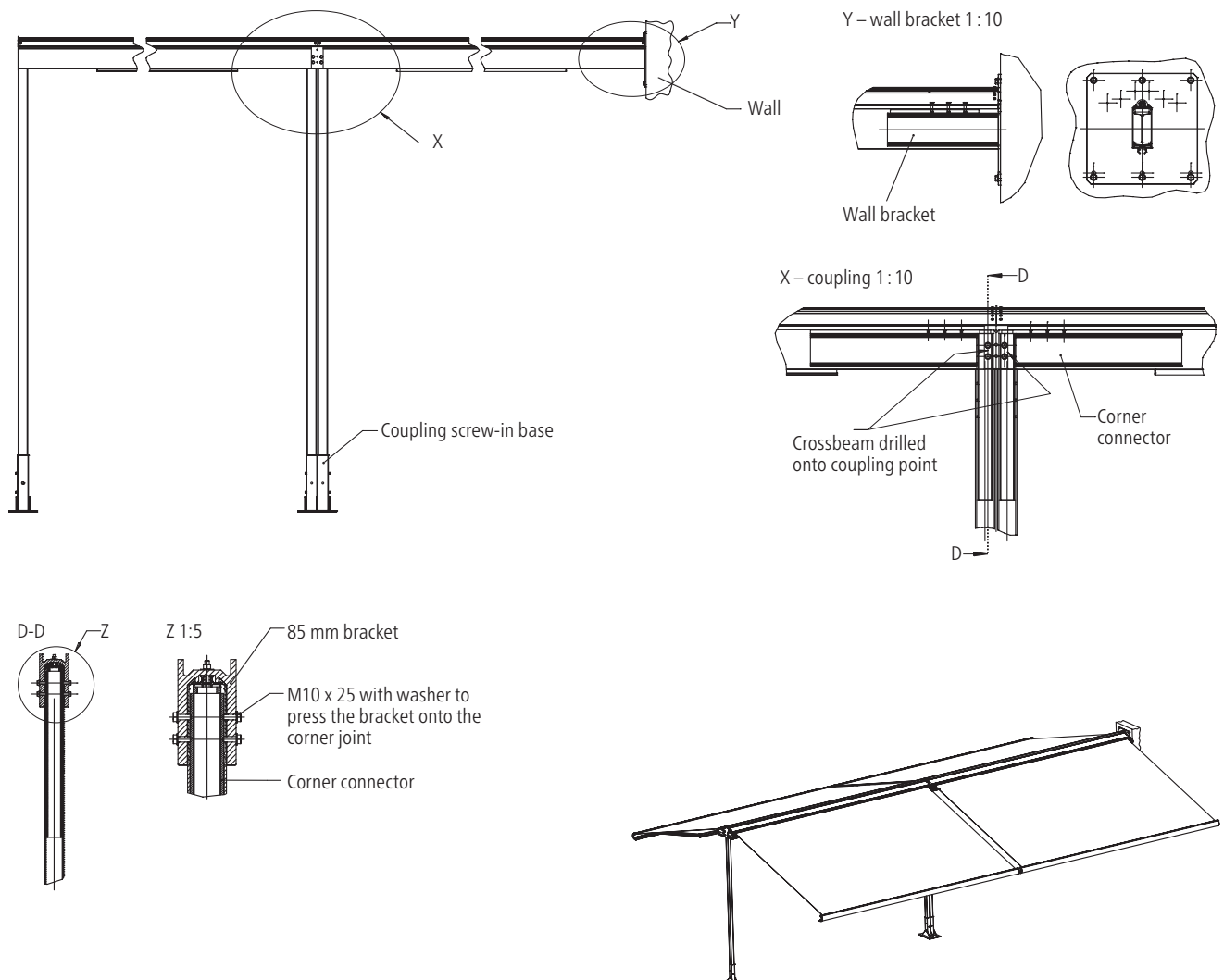


# Duofix Installation

## Wall bracket



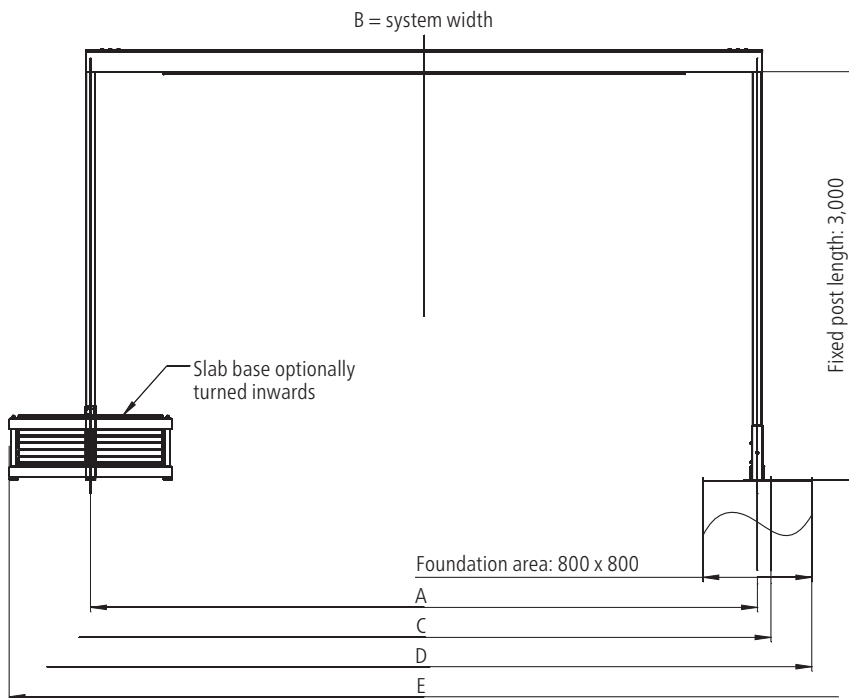
## Wall bracket coupling as multi-section unit





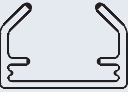


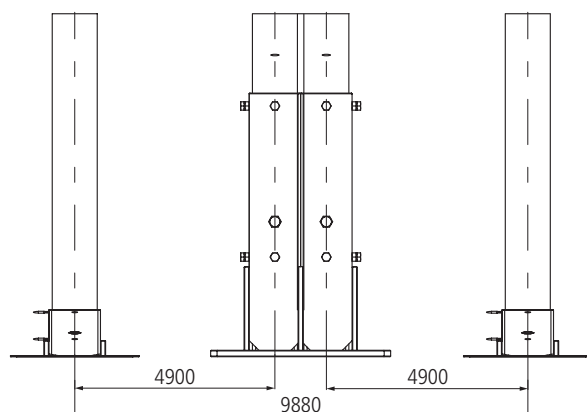
05

## Duofix Installation

### Adjustment measurements



	Name	Maße in mm
	Distance between centre lines A	$B - 100$
	Width C with screw-in base on both sides	$A + 200$
	Width D with foundation	$A + 800$
	Width E with slab base (if installed outside) (Not with multi-section units)	$A + 1200$
	70 x 70 mm post	3,000
	Square tube stabiliser 60 x 60 mm	1,500
	Universal rail	$B - 1140$

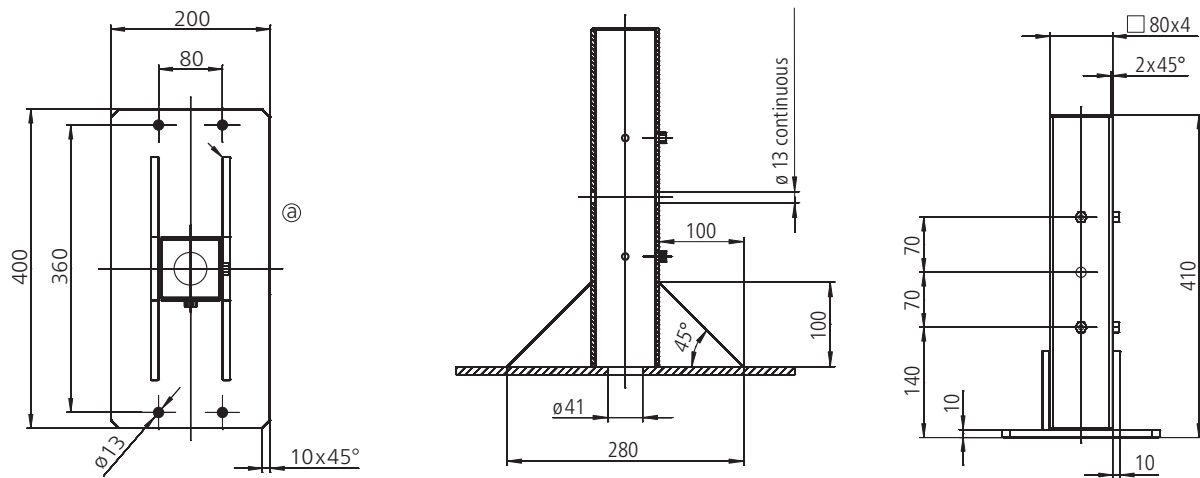


#### Mounting option: screw-in base

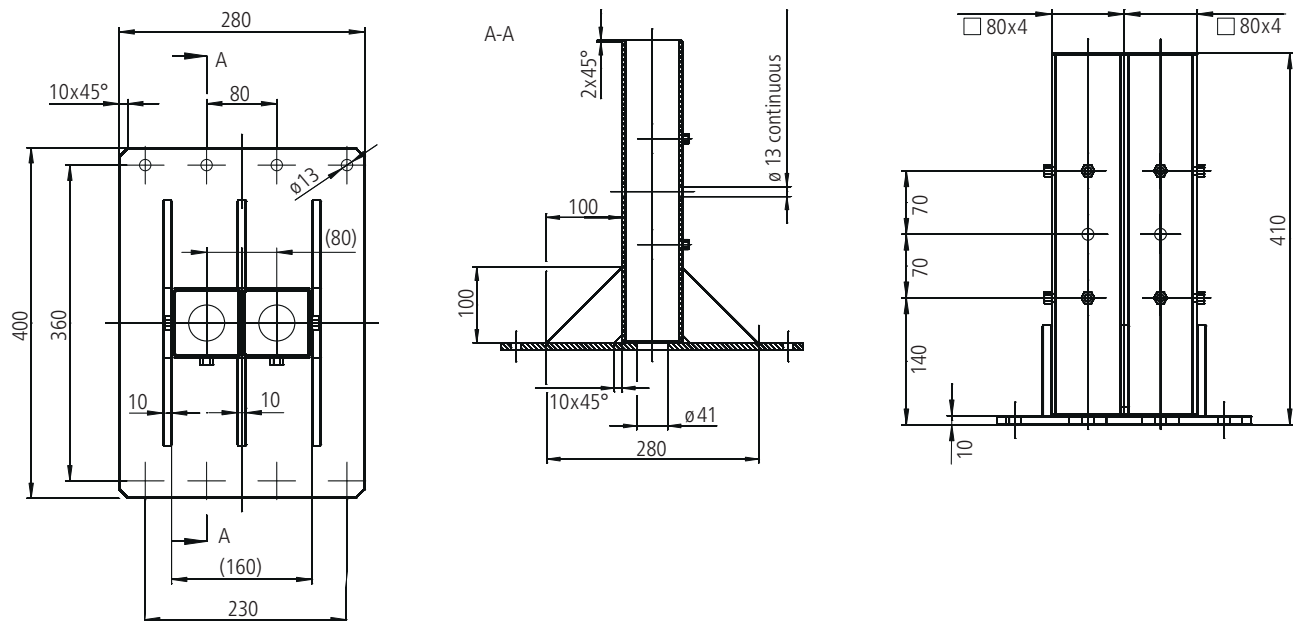
Here for an awning with length  $B = 5,000$  mm (distance between centre lines  $A = B - 100$ )

## Duofix Installation

### Screw-in base



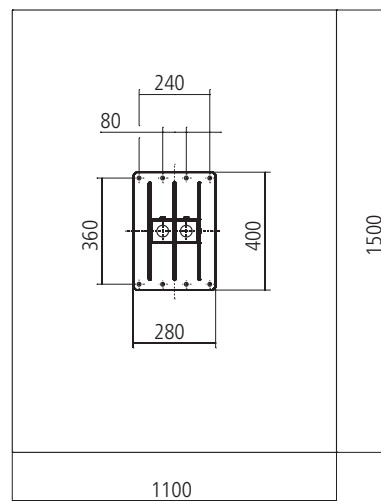
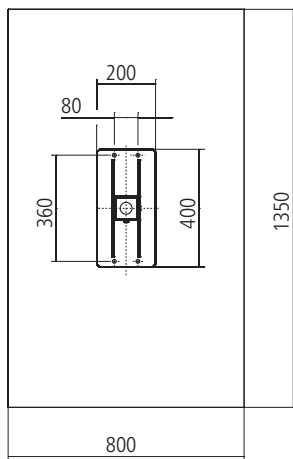
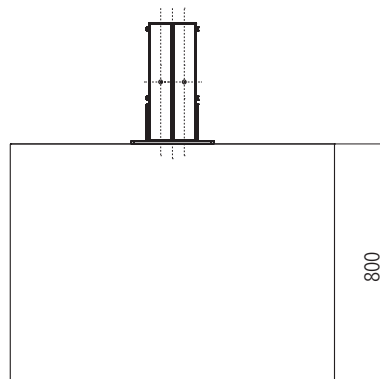
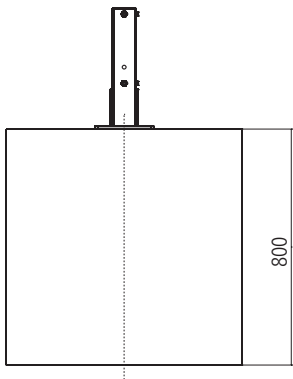
### Screw-in base, coupling



05

## Duofix Installation

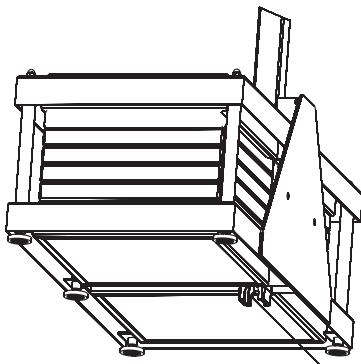
### Foundation plans



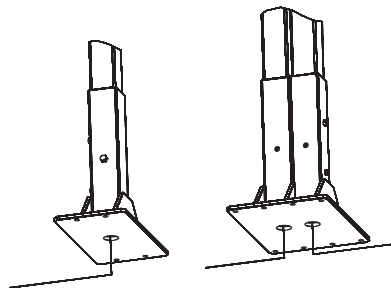
The foundations can be unreinforced from a static point of view. Additional reinforcement is purely constructive and not essential.

AVM-BGZ-R (A4) 125 M12 concrete anchors from Atrion are recommended to fix the screw-in base. Equivalent products from Fischer (type FAZ) or HILTI can also be used alternatively.

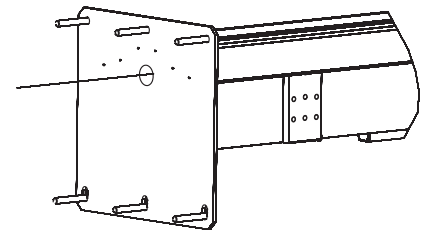
### Power supply lines



With the slab base, the leads can be inserted sideways into the slotted square tube post.



Screw-in bases have holes at the bottom ( $\varnothing$  40 mm). Leads can be guided upwards through the foundation into the square tube post.



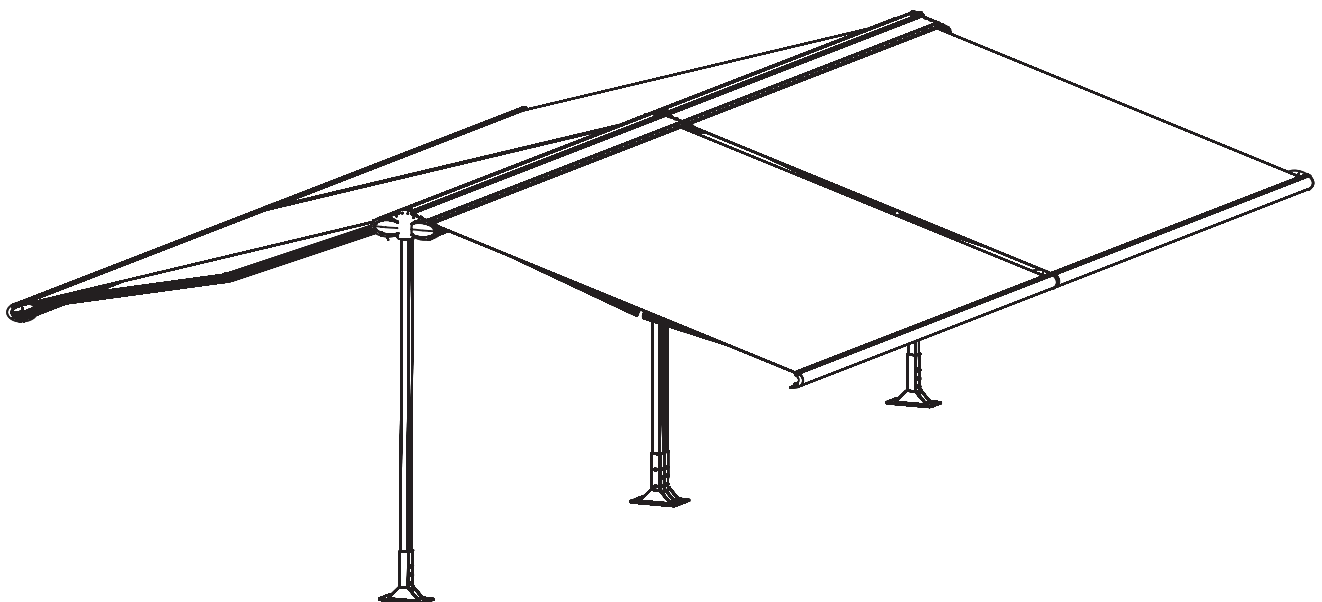
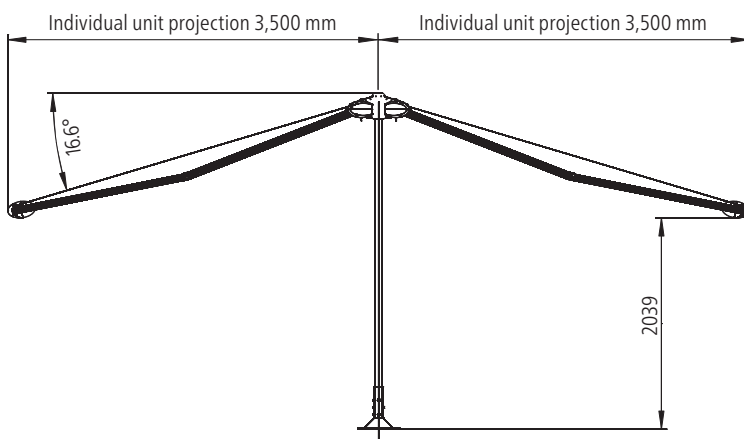
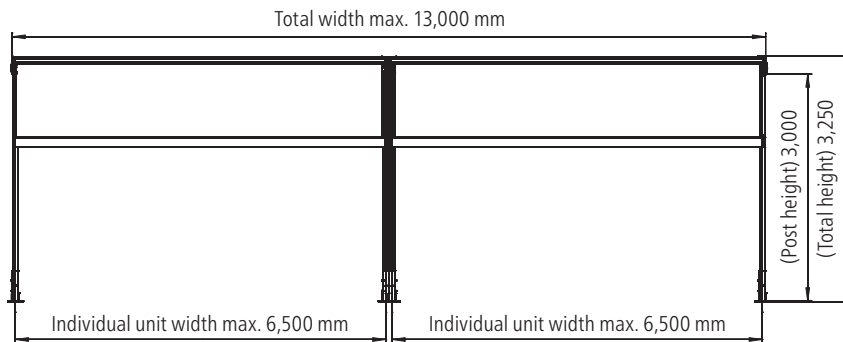
The wall connection bracket has a drilled hole ( $\varnothing$  40 mm) above the crossbeam for electrical connection on site.

# Duofix Multi-section Units

## Multi-section units (max. 2 pieces, only on request)

### Example Duofix multi-section unit with Opal Design II

Multi-section units are always supplied with screw-in bases. Two structurally identical products are always installed on one Duofix unit. The width of the individual units may vary.



05