



Cassette awning

## markilux MX-1

A designer cassette awning that meets the highest architectural requirements. The multitalented all-rounder that provides light, shade and the suggestion of a fixed, weatherproof canopy.



reddot design award  
winner 2015



[markilux.com](http://markilux.com)

[www.samsonawnings.co.uk](http://www.samsonawnings.co.uk)

01933 448 844

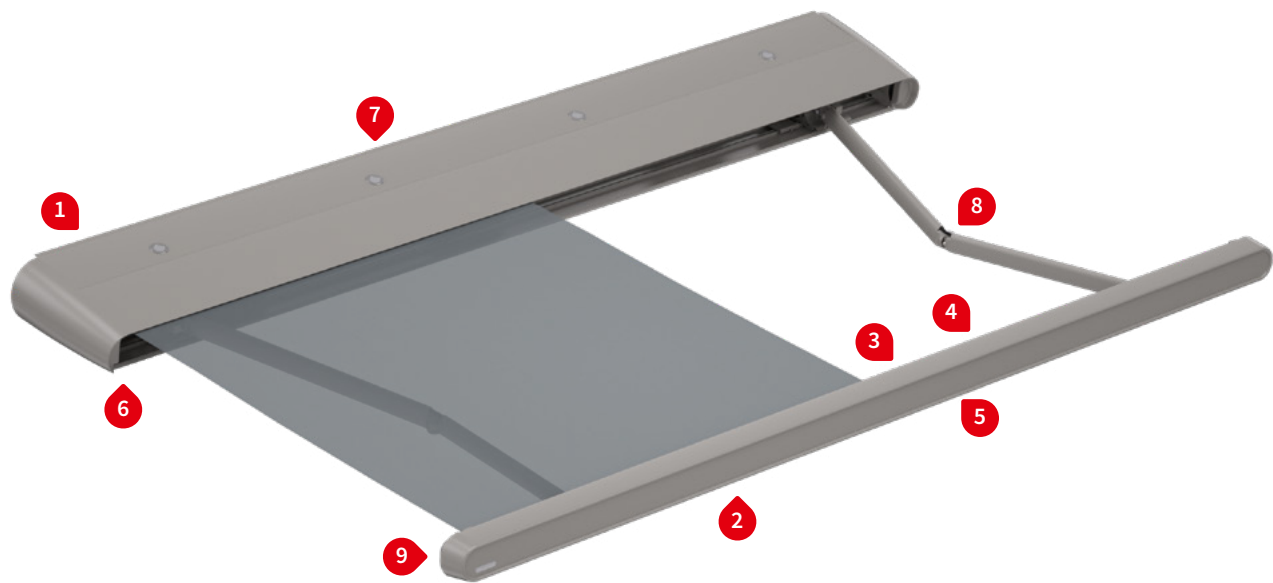
**markilux**  
safe timeless beautiful

[www.samsonawnings.co.uk](http://www.samsonawnings.co.uk)

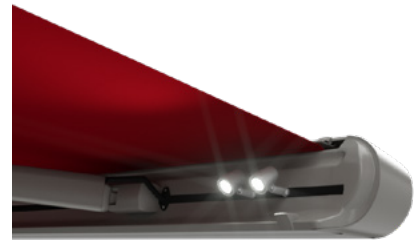
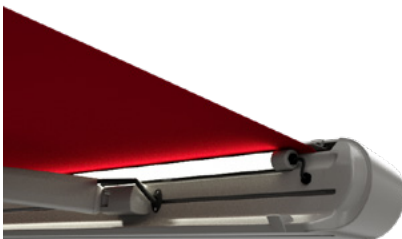
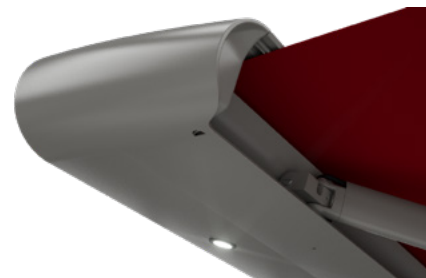
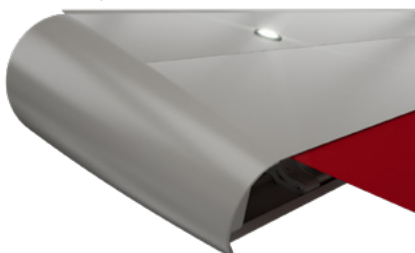
## Product characteristics

Wind resistance class 2

Beaufort 5 → 7.5–10.4 m/s → 28–37 km/h → 17–23 mph



1 face fixture

2 drop valance, during projection <sup>1)</sup>3 LED spotlights in the front profile <sup>1)</sup>4 LED-Line in the front profile <sup>1)</sup>5 LED ambient lighting in the front profile in 5 colour shades <sup>1)</sup>6 LED spotlights in the canopy, underneath <sup>1)</sup>7 LED spotlights in the canopy, on top <sup>1)</sup>

8 bionic tendon and hidden cable conduits in the arms



9 hidden gutter with lateral water spouts



1) optional configuration

## Product characteristics

### Description

- unique combination of full cassette awning and fixed canopy offering a plethora of accessories which gives character to any façade.

### Special features

- radio-controlled motor io as standard
- option of shadeplus up to a projection of 387 cm – vertical protection against low-lying sun and inquisitive glances integrated into the front profile, can be operated by radio remote control
- lighting options can be combined with one another: LED spotlights in the canopy above / below, directional LED spotlights or an LED light tube in the front profile, LED ambient lighting behind the front panel – provide lighting options to create an appealing atmosphere in the evening
- various screen profile and awning colours can be combined
- screen profile also available with exclusive coating in the “Selection MX colour selection”
- option of a silentec motor – motor noise is appreciably reduced
- the tilt device technology with integrated windlock mechanism functioning as arm bearers ensures the awning closes cleanly regardless of the pre-set pitch
- awning fits flat against the wall

### Dimensions

- cassette in the standard version: depth 600 mm, height 235 mm
- single unit: minimum width 203 cm at the smallest projection of 187 cm, maximum width 600 cm at the projection of 387 cm

### Roller tube and lateral bearings

- round roller tube Ø 85 mm with keyway, galvanised steel – excellent stability, ensures near perfect cover performance even at the largest widths
- the inside of the cassette side cap functions as the bearing for the roller tube, made of aluminium, powder coated

### Awning profiles

- extruded aluminium, in façade quality, powder coated
- visible profiles of the canopy housing in two parts, awning housing in two parts
- front profile with rain gutter and smooth front panel
- screen profile made of aluminium, powder coated, or of high quality perspex, transparent and dyed all the way through

### Folding arms

- profiles in extruded aluminium, in façade quality, powder coated
- moving parts made of drop-forged aluminium - the arms are therefore extremely fracture resistant
- pivot bolts in stainless steel run in Teflon-coated bronze bushes - practically maintenance free, virtually silent and extremely hard wearing
- power transference via the innovative bionic tendon at the elbow joint, made of high tensile, high-tech fibres – low in friction, noiseless, insensitive to corrosion and UV resistant

### Side caps

- the designer end caps for the cassette and canopy are in one piece and made of high-quality plastic, powder coated
- the designer end caps for the front profile are made of high-quality plastic, powder coated, with water drainage holes

### Fixture brackets

- face fixture
- extruded aluminium, powder coated
- stand-off fixture of the cassette in front of the canopy
- awning pitch adjustment range 5° to 25°
- spacer plates, stand-off brackets and other accessories are available

## Frame and front panel colours

### markilux frame colours without surcharge

traffic white RAL 9016

metallic aluminium RAL 9006

grey brown, similar to RAL 8019



off-white textured finish, 5233 <sup>1)</sup>

stone grey metallic, 5215 <sup>1)</sup>

anthracite metallic, 5204 <sup>1)</sup>



Havana brown textured finish, 5229 <sup>1)</sup>



### Non-standard powder-coated finish

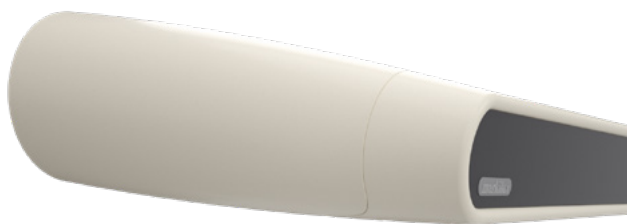
Bespoke frame colours at a surcharge – matt, metallic and pearl finishes as well as other colour ranges (DB, Tiger etc.) on request. All frame colours are available at a surcharge with enhanced corrosion protection.

Colours may differ slightly from those depicted in both hue and finish.

<sup>1)</sup> textured finish

## Possible combinations

All standard or ambiente lighting front panel colours can be freely combined with the standard frame colours.





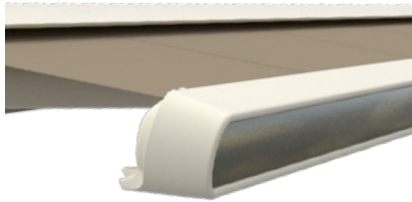
## Additional Selection MX front panel colours

### Recommended colour combinations<sup>2)</sup>

**SMX-01** Copper green with patina  
**Frame** Anthracite metallic 5204  
**Awning cover** 310 58



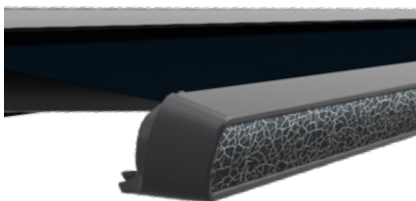
**SMX-02** Brass with dark patina  
**Frame** Off-white textured finish 5233  
**Awning cover** 324 49



**SMX-03** Bronze dark-patinated  
**Frame** Havana brown textured finish 5229  
**Awning cover** 309 47



**SMX-04** Matt black / silver effect lacquer  
**Frame** Anthracite metallic 5204  
**Awning cover** 310 28



**SMX-05** Matt white/silver effect lacquer  
**Frame** Off-white textured finish 5233  
**Awning cover** 310 09



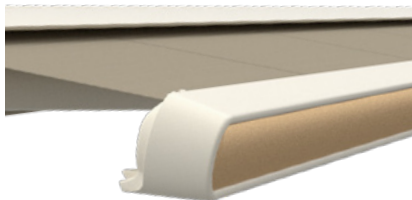
**SMX-06** Silver grey special effect lacquer  
**Frame** Stone grey metallic 5215  
**Awning cover** 310 18



**SMX-07** Amber orange metallic matt  
**Frame** Havana brown textured finish 5229  
**Awning cover** 314 83



**SMX-08** Pebble beige metallic matt  
**Frame** Off-white textured finish 5233  
**Awning cover** 314 87



**SMX-09** Ruby red metallic matt  
**Frame** Anthracite metallic 5204  
**Awning cover** 325 13



**SMX-10** Emerald green metallic matt  
**Frame** Havana brown textured finish 5229  
**Awning cover** 325 16



### Notes with regard to selecting colours from the markilux Selection MX range

Every front panel finished in a coating from the Selection MX range is unique. In a complex procedure, an exclusive look is created by using several layers of lacquer. During this process, the resulting colour and colour texture are influenced by different factors.

For technical reasons, a slight two-tone effect, variations in the degree of gloss and colour hue as well as small variations in colour between subsequent coats of paint in the same tone may be in evidence. The colour texture is always unique, particularly in the case of multi-layered coatings.

The compound colour tone SMX-10 Emerald green metallic is an interference colour, which has an iridescent effect depending on the light incidence and the viewing angle.

Feel free to combine any Selection MX front panel colour with any frame colour.

Colours may differ slightly from those depicted in both hue and finish.

## LED ambient lighting

During the daytime, switched off

light ivory, similar to RAL 1015

yellow, similar to RAL 1003

red, similar to RAL 3003



traffic white, similar to RAL 9016

yellow green, similar to RAL 6018

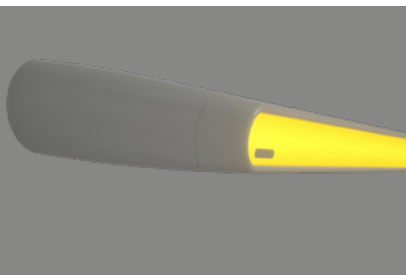
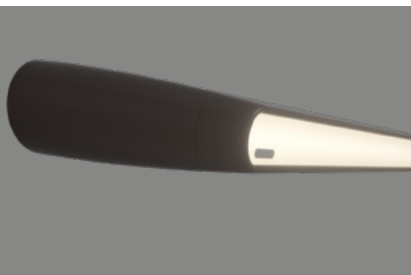


During the evening, switched on

light ivory, similar to RAL 1015

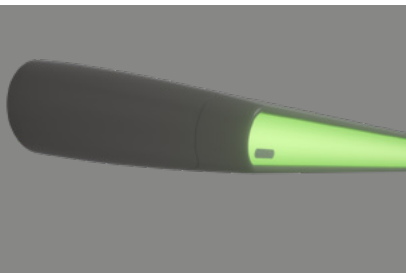
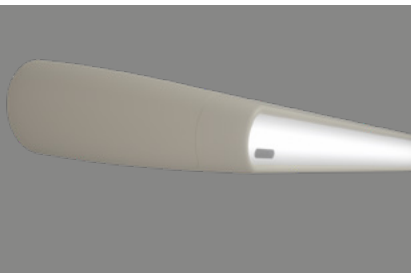
yellow, similar to RAL 1003

red, similar to RAL 3003



traffic white, similar to RAL 9016





yellow green, similar to RAL 6018



Colours may differ slightly from those depicted in both hue and finish.

## Dimensions and configuration options

### Single unit




		Overall awning width								Minimum width			
		250	300	350	400	450	500	550	600	Motor			
Order dimensions		203 250	251 300	301 350	351 400	401 450	451 500	501 550	551 600				
H	187	1)								216	203	463	450
	237	—	1)							266	253	513	500
	287	—	—	1)						316	303	563	550
	337	—	—	—	1)					366	353	613	600
	387	—	—	—	—	1)				429	416	663	650
	437 <sup>2)</sup>	—	—	—	—	—	1)		—	479	466	—	700

dimensions in cm

1) = please note the minimum widths!

2) = drop valance not available

H = projection

 = 2 folding arms, 2 brackets = 2 folding arms, 3 brackets, 1 rolltex bearing = 2 standard arms = 2 bespoke arms (surcharge) = 3 standard arms = 3 bespoke arms (surcharge)

### Operation

	standard	optional
crank handle	—	—
spring-assisted crank handle	—	—
hard-wired motor	—	✓
silentec motor (optionally with an external io / RTS receiver) <sup>1)</sup>	—	✓
radio-controlled motor io, 868 MHz	✓	—
radio-controlled motor RTS, 433 MHz	—	✓
radio-controlled motor RTS, 433 MHz with manual override <sup>1)</sup>	—	—

<sup>1)</sup> for awnings with a maximum of 2 arms

### Coupled Awning

not available
---------------

### Awning cover

	fabric range no.	standard	optional
sunvas	301.. / 309..–315..	✓	—
perla	370 ..	—	✓
sunsilk	324.. / 325.. / 328.. / 369..	✓	—
perla FR	374.. / 375..	—	✓
perfortex	331.. / 332..	—	—
transolair	338..	—	—
vuscreen Alu	317..	—	—
Soltis Perform 92	92-20..	—	—
glass fibre screen	272..	—	—
valance <sup>1)</sup> , height 20 cm		—	✓

<sup>1)</sup> can only be attached to a drop valance

### Shadeplus / drop valance <sup>1)</sup>

	standard	optional
height 170 cm		
max. projection 387 cm		
crank handle	—	—
hard-wired motor	—	✓
radio-controlled motor io, 868 MHz	✓	—
radio-controlled motor RTS, 433 MHz	—	✓
cover	sunvas / sunsilk / transolair / vuscreen Alu	

<sup>1)</sup> Only available in plain seamless fabrics (oversized, fabric width > 120 cm) or in plains with a horizontal joint (fabric width 120 cm).

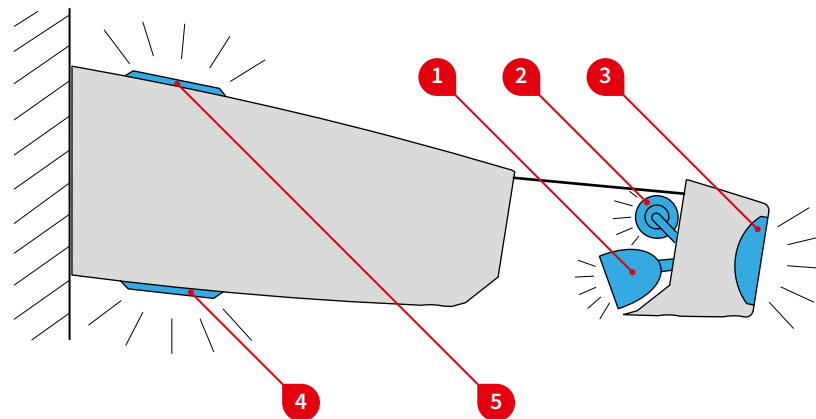
**Optional accessories**

drop valance, motor operation
LED spotlights in the canopy facing up and/or down
LED-Line <sup>1)</sup> in the front profile
LED spotlights <sup>1)</sup> in the front profile
LED-ambiente lighting in the front profile
valance (can only be attached to a drop valance)
infrared heater 2000 W / 2500 W
infrared heater 2500 W with integrated radio-controlled receiver 868 MHz io

1) LED-Line and LED spotlights cannot be combined with one another.

**Fixture brackets**

face fixture bracket	72618.
spreader plate A 430 × 160 × 12 mm	75328.
spreader plate B 300 × 400 × 12 mm	75327.
stand-off bracket 80–300 mm	77970.

**Lighting options****Lighting options**

1) LED spotlights <sup>1)</sup> in the front profile
2) LED-Line <sup>1)</sup> in the front profile
3) LED ambient lighting in the front profile
4) LED spotlights in the canopy, underneath
5) LED spotlights in the canopy, on top

1) LED-Line and LED spotlights cannot be combined with one another.

**Control**

	standard	optional
operation on/off	—	✓
radio-controlled dimmer io 868 MHz	✓	—
radio-controlled dimmer RTS 433 MHz	—	✓



**1 LED spotlights in the front profile****Technical specification**

Operating voltage	230 V, 50 Hz
Power output of one LED spotlight	5 W
Light source	LED (12 V)
Number of transformers	1 unit
Light temperature	warm white
IP protection class	IP 44
Service life	approx. 20.000 h

**2 and 3 LED-Line and LED ambient lighting in the front profile****Technical specification**

Operating voltage	230 V, 50 Hz
Power output of one LED spotlight	10 W <sup>1)</sup>
Light source	LED (12 V)
Number of transformers	120 pieces / m <sup>2)</sup>
Light temperature	warm white
IP protection class	IP 44
Service life	approx. 15.000 h <sup>3)</sup>

In the case of LED ambient lighting in awning widths > 600 cm:

**1)** 9 W / m

**2)** 90 pcs / m

**3)** approx. 20.000 h

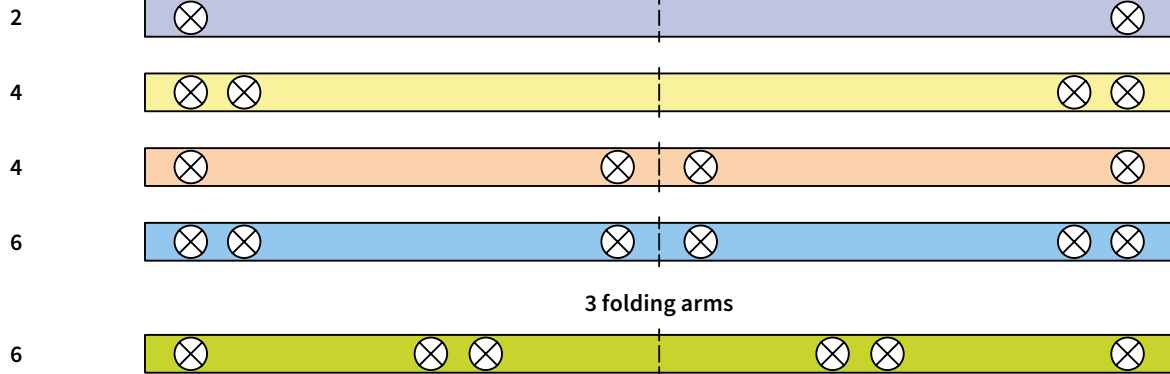
**4 and 5 LED spotlights in the front profile (underneath / on top)****Technical specification**

Operating voltage	230 V, 50 Hz
Power output of one LED spotlight	3,5 W
Light source	LED (12 V)
Number of transformers	1 unit
Light temperature	warm white
IP protection class	IP 44
Service life	approx. 15.000 h

# 1 LED spotlight in the front profile – distribution table

Number of  
LED spotlights

2 folding arms

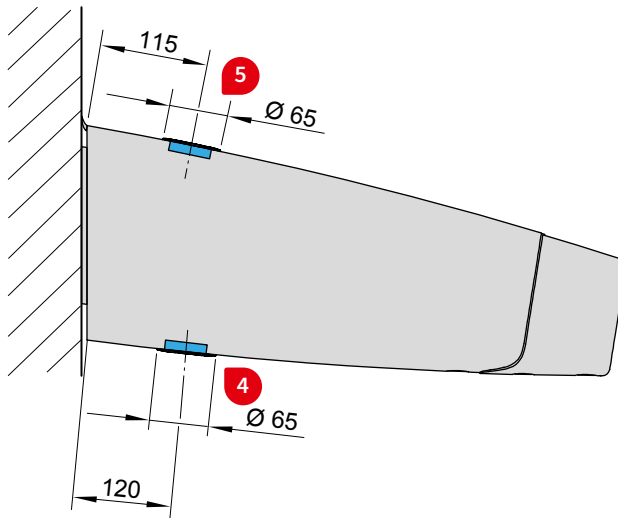
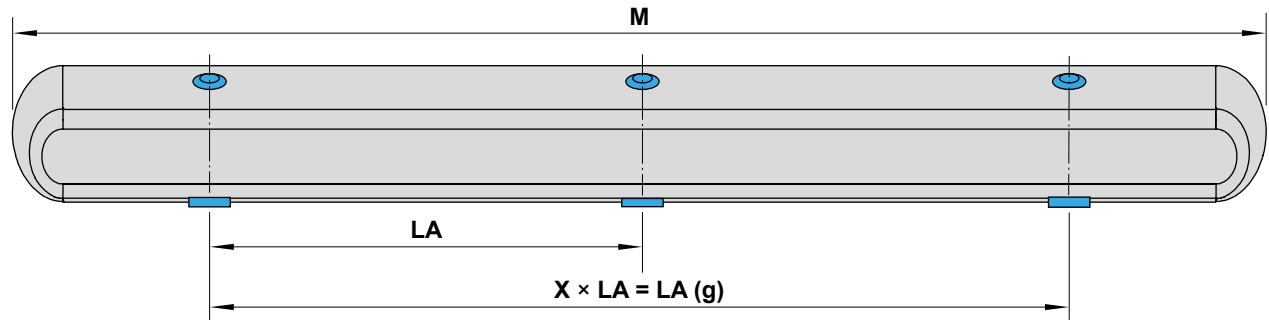


# 1 Number and distribution of the LED spotlights in the front profile

Overall awning width	Projection					
	187	237	287	337	387	437
228–247	2	—	—	—	—	—
248–250	4	—	—	—	—	—
251–262	—	—	—	—	—	—
263–277	4	—	—	—	—	—
278–282	4	2	—	—	—	—
283–297	6	2	—	—	—	—
298–300	6	4	—	—	—	—
301–312	—	—	—	—	—	—
313–327	4	4	—	—	—	—
328–332	4	4	2	—	—	—
333–347	6	6	2	—	—	—
348–350	6	6	4	—	—	—
351–358	—	—	—	—	—	—
359–378	4	4	4	—	—	—
379–397	6	6	6	2	—	—
398–400	6	6	6	4	—	—
401–418	4	4	4	2	—	—
419–440	6	6	6	4	—	—
441–450	6	6	6	4	2	—
451–458	4	4	4	4	2	—
459–460	6	6	6	6	2	—
461–490	6	6	6	6	4	—
491–500	6	6	6	6	4	2
501–518	4	4	4	4	4	2
519–550	6	6	6	6	6	4
551–568	4	4	4	4	4	—
569–600	6	6	6	6	6	—

dimensions in cm

**4** and **5** LED spotlight distribution in the canopy, above / below



**4** and **5** Number and distribution of the LED spotlights in the canopy, above / below

Overall awning width	No. of spotlights	LA	LA (g)
150-250	3	75	150
251-300	3	98	196
301-350	3	98	196
351-400	4	98	294
401-450	4	98	294
451-500	5	98	392
501-550	5	98	392
551-600	6	98	490

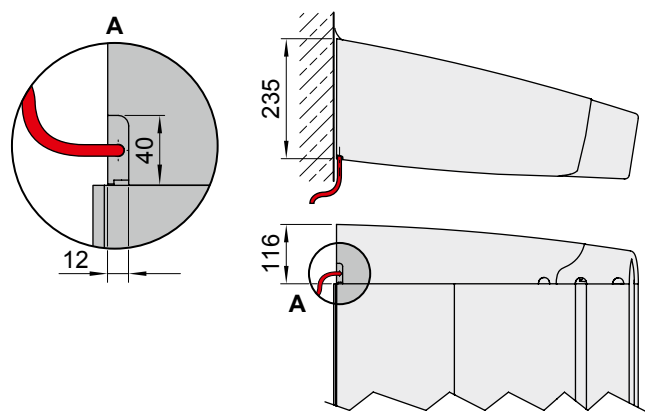
dimensions in cm

LA (g) = total distance from the first to the last spotlight

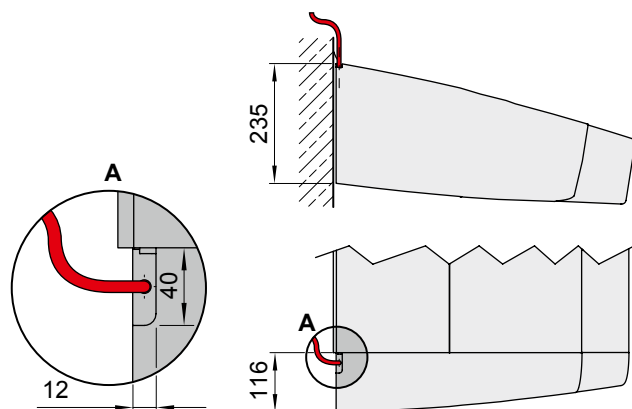
M = order dimension = awning width

dimensions in mm

## Cable exit point underneath (standard)



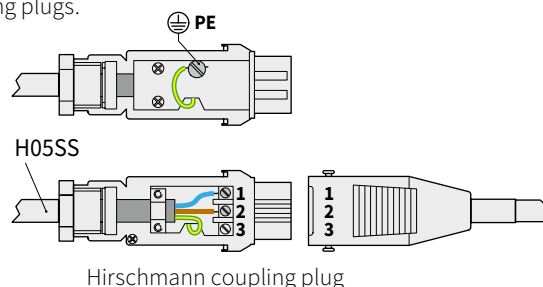
## Cable exit point on top (optional)



dimensions in mm

## Electrical connection

The awning is connected with **a single power supply cable** (even if optional accessories such as illumination and shadeplus are included) and split out via coupling plugs.



**3 × 1.0 mm<sup>2</sup>**

**1** = neutral N (blue)

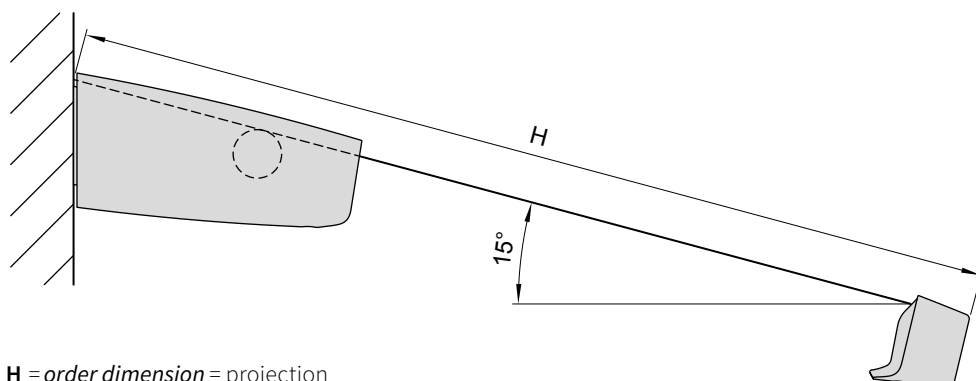
**2** = live L (brown)

**3** = not in use

**PE** = earth (green / yellow)

## Definition of unit height

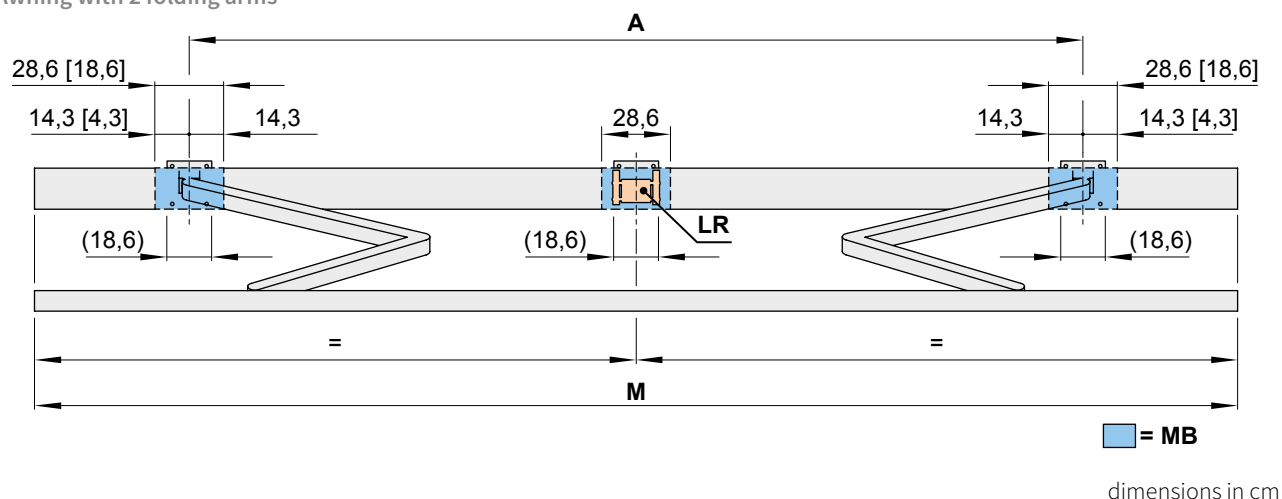
The nominal projection is measured with the awning extended at a pitch of approximately 15° from the back of the fixture brackets over the cover to the leading edge of the front profile. For the tolerances in the projection please consult the section "Technical Information".



**H** = order dimension = projection

## Bracket fixture range

Awning with 2 folding arms



		Overall awning width							
		250	300	350	400	450	500	550	600
Order dimensions		203	251	301	351	401	451	501	551
		250	300	350	400	450	500	550	600

		Arm position A							
H	187	169 <sup>1)</sup>	204	254	300	340	380	440	490
	237	—	219 <sup>1)</sup>	254	300	340	380	440	490
	287	—	—	269 <sup>1)</sup>	300	340	380	440	490
	337	—	—	—	319 <sup>1)</sup>	340	380	440	490
	387	—	—	—	—	382 <sup>1)</sup>	390	440	490
	437	—	—	—	—	—	432 <sup>1)</sup>	440	—

		No of brackets   No. of fixing points	
W	BHT 18.6	2   8	
BP		A 2   16    B 2   8	
DP		1	

dimensions in cm

1) Dimension **A** is only valid for standard arms! Dimension **A** is 13 cm smaller in the case of bespoke arms. Please note the minimum widths! If the brackets cannot be positioned in accordance with this table, make sure the actual measurements are noted on the order form!

[...] = dimensions only apply at the minimum widths

(...) = width of standard fixture brackets

**A** = arm position

**BHT** = bracket width

**BP** = spreader plate A or B, to be positioned behind the folding arm

**DP** = spacer plate 74989, to be positioned behind the rolltex bearing in the case of fixture with spreader plate A or B

**H** = *order dimension* = projection

**LR** = a rolltex bearing with accompanying bracket is always placed under a central seam (depends on the awning size)

**M** = *order dimension* = awning width

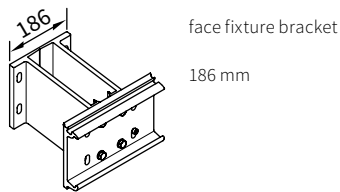
**MB** = bracket fixture range

**W** = face fixture

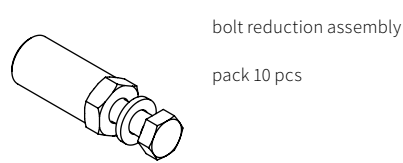


## Face fixture

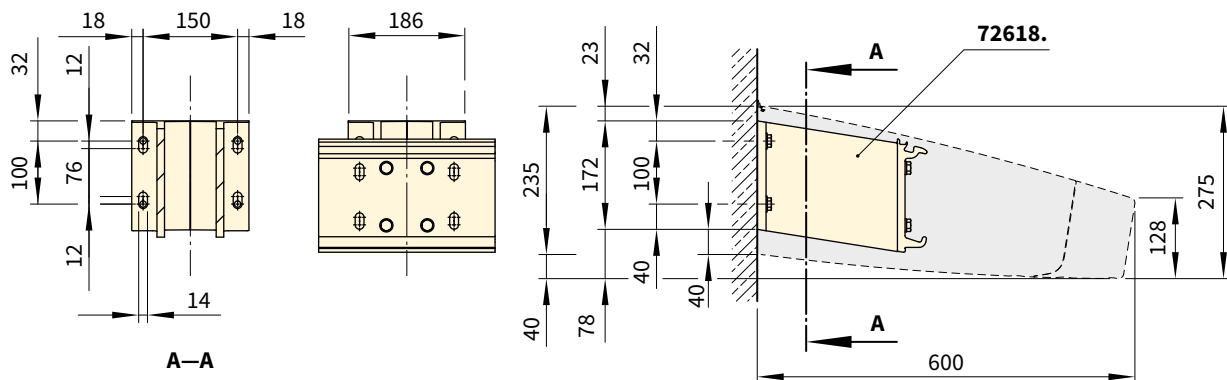
### Fixtures, fittings and accessories



72618.

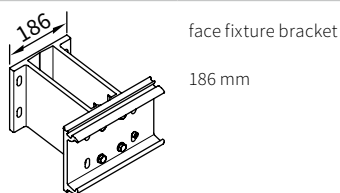


M 16 → M 12 | M 16 → M 10 | M 12 → M 10 | M 10 → M 10

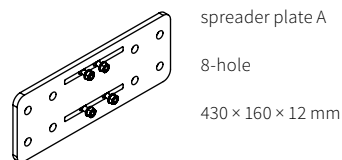


## Face fixture with spreader plate A

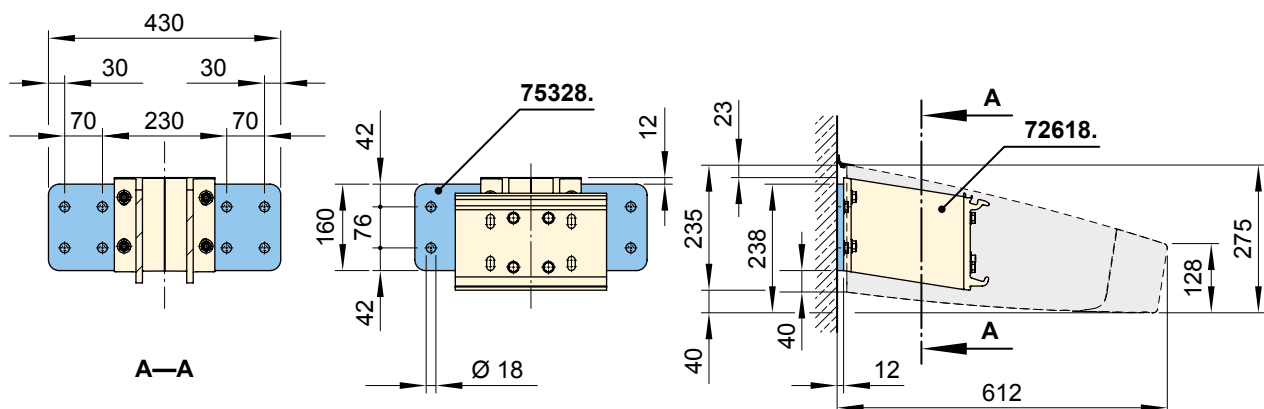
### Fixtures, fittings and accessories



72618.



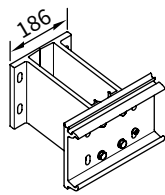
75328.



dimensions in mm

## Face fixture with spreader plate B

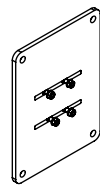
### Fixtures, fittings and accessories



face fixture bracket

186 mm

72618.

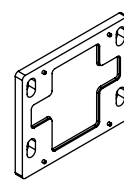


spreader plate B

300 × 400 × 12 mm

4-hole

75327.

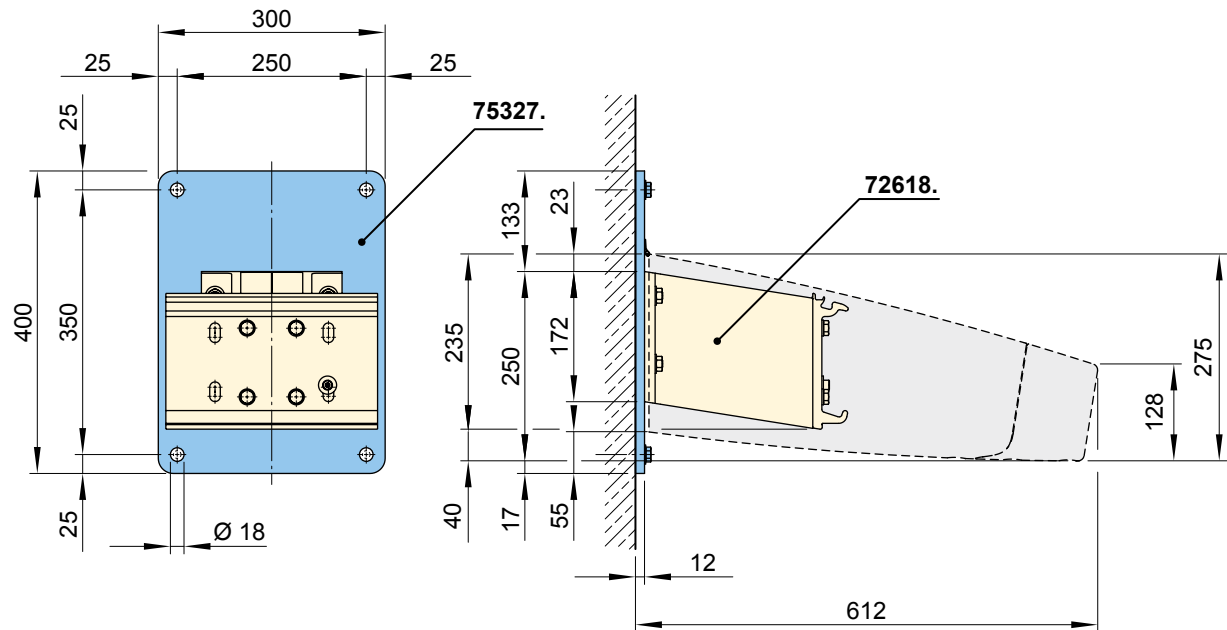


spacer plate for face fixture

180 × 150 × 12 mm

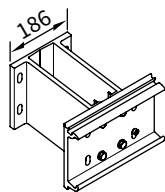
**N.B!**  
stack to a max. height of 200 mm

74989.



## Face fixture with stand-off bracket

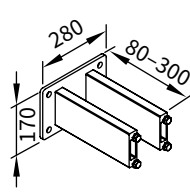
### Fixtures, fittings and accessories



face fixture bracket

186 mm

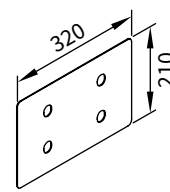
72618.



stand-off bracket

80–300 mm

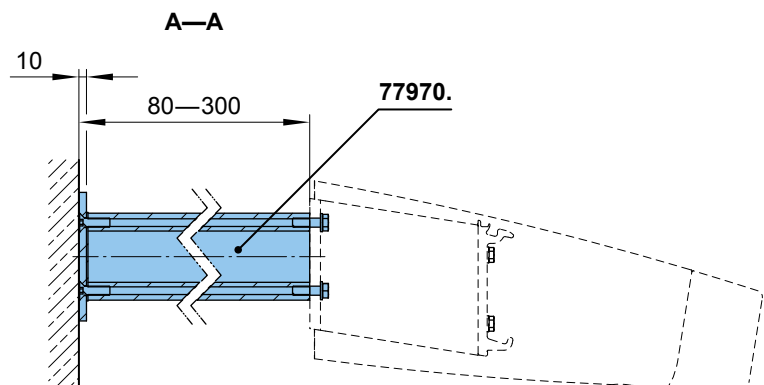
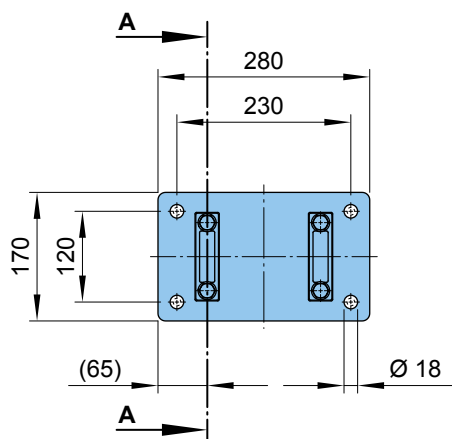
77970.



cover plate for spacer plate and stand-off brackets in case of external insulation

320 × 210 × 2 mm

71842.



dimensions in mm