

## General Information



### markilux awning covers are convincing products because of their quality and appearance.

With the purchase of a markilux awning cover you have chosen a high.-class quality product. All fabrics are produced on state-of-the-art weaving looms. This guarantees an extremely high degree of perfection. Meticulous checks also ensure that we only ever supply functionally flawless covers. However, awning covers not only serve as effective protection from the sun. They also have a decisive impact on the colour ambience and hence the atmosphere under an awning.

For even greater enjoyment of the colour provided by the shade

of an awning, markilux offers not only its classic acrylic fabrics, but also awning covers in sunsilk snc, an innovative high-tech material.

The "Öko-Tex Standard 100" certificate guarantees that no harmful dyes or chemicals were used to make this sunsilk awning material.



### Effective protection from UV rays

Due to the increased strength of UV radiation, healthcare during our leisure time is gaining in importance. Therefore it is important to know just how many harmful UVA and UVB rays will pass through the cover when purchasing an awning. markilux fabrics in dark colours afford 100 percent protection. The lighter colours (right through to plain white) stop up to 97 percent of UV radiation. These figures are based on research conducted by the Hohenstein Research Institute as well as the manufacturer of our fabric yarns. All fabrics achieve the highest possible sun protection factor for textiles (UPF 50+). The UPF (Ultraviolet Protection Factor) specifies how much longer one can sit in the sun when protected from it by the given UPF. Fabrics with an ultraviolet protection factor of 50+ would enable you to sit out safely in the sun fifty times longer than you would otherwise be

able to without becoming sunburnt, if you were to rely solely on the protection provided by your skin. In order to ascertain the sun protection factor required, you need to know what level of protection is provided by your own skin, as well as the length of time you wish to sit in the sun (your own protection time x sun protection factor = maximum sunbathing time). It is essential to bear in mind here that the sun protection (awning) fabric is only able to reduce the effect of direct sunlight and not that resulting from reflected UV radiation.

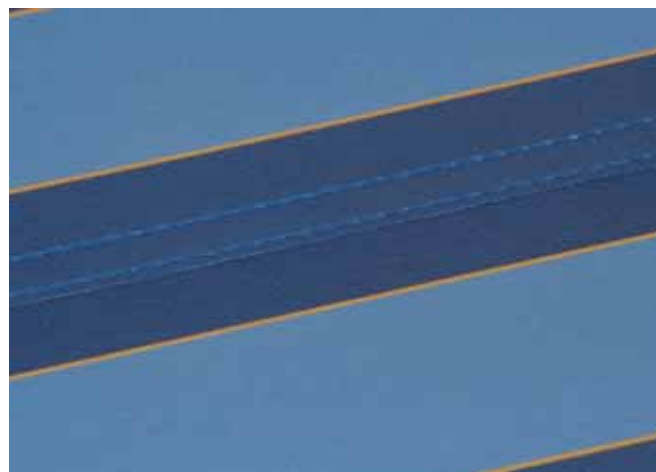


## General Information

### Ultrasonic bonding process for acrylic and sunsilk and fabrics perla FR, transilk and transolair awning covers



bonded awning cover



stitched awning cover

#### **Bonded awning covers give an improved appearance.**

The bonding process lends the cover a vastly improved appearance. It has been tested for its longevity. The compression bonding process offers a number of advantages. Under normal conditions the panel joints are impermeable to light and water and resistant to changes in temperature. The cover is more likely to last longer because of its smooth surface. In addition bonding avoids the problem of the gradual breakdown of the sewing thread from the effects of UV and weathering.

#### **Awning covers on markilux awnings.**

We supply our awnings with bonded covers. If you would prefer your awning cover to be produced in the conventional stitched finish, we kindly request you to state this clearly on your order. The same charge is made for both processes on all markilux awnings. Exception: we supply covers from other collections, perfortex, and covers for the markilux 8000 and markilux 8500 conservatory awnings with a stitched finish. These conservatory awnings (with the exception of perfortex covers) can be supplied with bonded covers for a little extra.

#### **Made-up awning covers**

When ordering ready-made covers, we kindly request that you clearly state whether you require a stitched or bonded cover. For bonded covers please refer to the additional charges quoted in our price list. The advantages you gain with bonded

#### **covers by markilux:**

- the compression bonding process offers a number of advantages. Under normal conditions the panel joints are impermeable to light and water and resistant to changes in temperature.
- the cover is more likely to last longer because of its smooth surface.
- no premature aging through the effects of UV and weathering of the most sensitive part of the cover - the thread
- improved, homogeneous appearance without unsightly threads
- ideal tension dispersion through holohedral overlap bond
- no fraying of threads as the result of wear caused by the roller support (rolltex bearing)

## The product characteristics of awnings and covers

Awning covers are industrially manufactured textile products which serve both a functional and a decorative role. They are high-performance products that meet strict technical requirements and undergo extensive laboratory testing during every production run. Criteria such as water impermeability, rigidity, dirt and water-repellent properties, resistance to tearing and tear propagation, colour fastness and numerous other characteristics are defined, assessed and guaranteed for each fabric type by the manufacturer.

Although only first-class, quality controlled fabric is used in awning production, there are limits to the degree of perfection that can be achieved. Awning owners occasionally complain about certain imperfections in the fabric but such characteristics cannot be completely eradicated even with today's technology.

### Creases

can appear during the cover making process and when the fabric is folded. A dark line may become visible at the crease when viewed against the light, especially with light colours. This is because the fibres are bent when the fabric is folded, which changes the light transmitting qualities of the material.

### Puckering

can appear along the side hems, around the seams and in the centre of the panel. There is a double layer of fabric at the seams, which are sewn or bonded when flat. As the cover is wound onto the roller the two layers of fabric are forced to assume different diameters thus creating tension within the fabric. The tension of the folding arms and the weight of the roller and/or front profile can contribute to this effect. Puckering can also develop if a water trough forms during heavy rainfall.

### Water impermeability / resistance to rain

Sunshade fabrics are impregnated with a water-repellent finish and, if properly cared for and used at a pitch of at least 14°, remain impervious to water during short, light rainfall. During prolonged and/or heavy rainfall the awning must not be extended or should be retracted to prevent any damage. If the cover gets wet the awning must be extended again later so that it can dry to prevent marking of the fabric.

### Tension-induced stretching of the side hems

In most cases an active tensioning system keeps the cover taut almost permanently. Although seams and hems provide reinforcement, they also have to withstand the most strain. When the cover is rolled up the seams and hems roll up on themselves, which increases the pressure and tautness still further. They are therefore put under a lot of tension and this can cause them to stretch slightly. As a consequence side hems may sag slightly when the awning is extended.

Source: BKTEX

In the case of both stitched and bonded covers all seams are symmetrical. This ensures that the awning runs smoothly and that it is aesthetically pleasing to the eye, as - in the case of striped fabrics - the pattern on both sides of the cover finishes evenly.

So that you may enjoy your awning cover for many years to come here are a few tips for its care: Dust can best be removed when dry with a soft brush. Remove leaves, twigs and similar debris immediately. Small persistent marks should be removed as follows: Wash by hand using a commercially accepted - preferably liquid - detergent (5% soap solution at max. 30°C water temperature). Rinse thoroughly with clean water.

### Awning use in wind, rain, snow and ice

Just as the sailor reefs and furls his sails so you too should retract your awning in strong wind and rain. To prevent anything unforeseen happening this should be done at night too to ensure a good night's sleep.

If the pitch of the awning is less than 14° (to the horizontal) then the awning should not be extended when it is raining. Otherwise water may collect on the cover and cause it to sag. This may lead to the awning being damaged or people being injured. If your awning has been retracted when wet it should be extended again at the earliest opportunity to allow it to dry.

If the wind speed exceeds that of the permitted wind resistance class (v. the chapter "Technical Information - Fixture of Awnings in accordance to EN 13561") and in the case of frost or snow the blind or awning must be retracted immediately. If there is snow on the awning it must be removed before the system is retracted. Do not close a unit whose cover is frozen. It must be thawed out first.

An automatic sun, wind and rain sensor or timer that extends or retracts the awning according to the weather conditions is no guarantee that the awning system will function perfectly indefinitely. It does not, therefore, relieve the owner of the duty to exercise due diligence. In times of absence, e.g. during holidays, at night or in bad weather the awning should be retracted and an automatic control system switched off.

Dampness and cold can lead to the cover becoming stiff and the motor safety cut-off to activate. This will prevent the awning from being retracted for a short while.

### Awnings with motor drive

If there has been a power cut a purely motor-driven awning cannot be retracted. Retracting and extending the awning several times in quick succession may activate the thermal cut-out mechanism, which prevents the motor from overheating. After it has cooled down the motor will reactivate itself again.

### Definition of operation side

The operation side is given looking at the blind or awning from outside (right or left)

**Detailed instructions for the awning dealer containing all important information with regard to operation, care and maintenance are included with every awning delivery.**





## sunsilk snc signature

Something exclusive at no extra cost –  
the SigNature series of fabrics made of sunsilk snc

To cater for highbrow tastes, the stylists at markilux - together with internal and external designers - have developed the signature collection.

Our natural and architectural surroundings formed the inspiration for the design of 23 unusually elegant types of fabric. The colour concept was taken from photos with an extremely high pixel resolution.

Four themes (life, architecture, nature, the elements) ensure faster orientation. Experience the the uniqueness of the signature patterns.

The superior colour brilliance of sunsilk snc has already fascinated many. The light, silk-like fabric is just as resistant to light and weather as conventional acrylic fabric.

The illustrations show the colour brilliance of the awning fabric as if you were looking through it, the way you experience it while enjoying the luminous shade of your awning.

signature sunsilk snc has a lot in its favour:

- rot proof polyester fabric with outstanding brilliance of colour, and high tensile strength
- made from silky, high-tech fibres
- highest UV, light and weather fastness
- light and colour according to ISO 105/B02, achieving a mark of 7-8 (marking scale 1 = faulty to 8 = very good)
- weatherproof according to ISO 105/B04, achieving a mark of 7-8 (marking scale 1 = faulty to 8 = very good)
- extremely dirt, grease and water repellent by virtue of the snc coating
- resistant to all environmental influences
- quick drying, easily cared for
- insensitive to heat and cold
- excellent solar protection  
UPF 50+ according to EN 13758-1

## sunsilk snc

The new sunsilk snc fabrics with extreme  
brilliance and luminosity

sunsilk snc combines a new lightness with optimum solar protection.

It is a priceless experience when the new sunsilk snc fabrics with their outstanding colour brilliance bathe your patio or the adjacent rooms in a warm, soothing light and a luminous shade. This is the result of years of research.

We have managed to guarantee high resistance to the effects of ultraviolet light for finely dyed fabrics. This characteristic has been attributed only to customary acrylic fabrics up till now.

The new sunsilk snc fabrics are thinner, smoother and lighter than acrylic awning material. Nevertheless their technical specifications are equal in all respects and very often even superior to those of acrylic fabrics.

The silkiness of the fabric and the small winding circumference reduce the formation of puckering. sunsilk snc the innovative awning fabric with the self-cleaning effect in rain (a minimum pitch of 14° is required to ensure water run-off). Very dirty covers can be cleaned with a water jet (not high pressure). The new highly dirt-repellent coating on the fabrics ensures they will remain luminous for many years to come.

collection

# life

# architecture

# nature



36 944 sunsilk snc



36 984 sunsilk snc



36 986 sunsilk snc



36 945 sunsilk snc



36 988 sunsilk snc



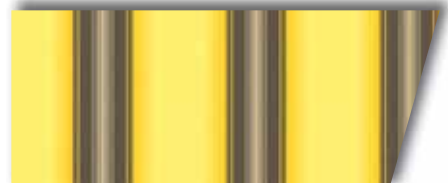
36 916 sunsilk snc



36 943 sunsilk snc



36 935 sunsilk snc



36 963 sunsilk snc



36 950 sunsilk snc



36 942 sunsilk snc



36 989 sunsilk snc

# the elements

# structure

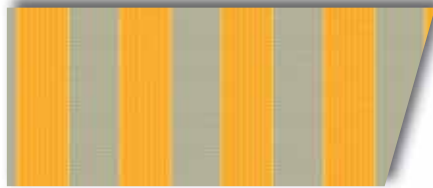
## sunsilk snc *signature*



36 952 sunsilk snc

36 995 sunsilk snc

# structure



36 969 sunsilk snc

36 990 sunsilk snc

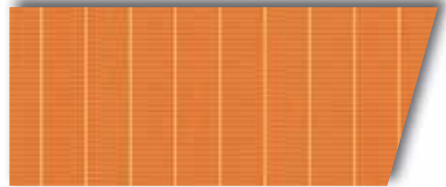
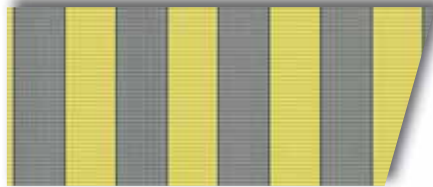
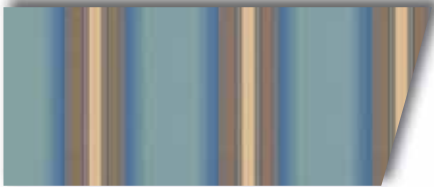
36 993 sunsilk snc



36 925 sunsilk snc

36 991 sunsilk snc

36 994 sunsilk snc



36 949 sunsilk snc

36 996 sunsilk snc

36 949 sunsilk snc

collection



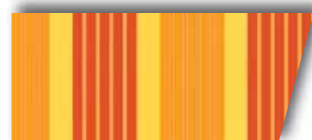
32 958 sunsilk snc



32 940 sunsilk snc



32 912 sunsilk snc



32 953 sunsilk snc



32 941 sunsilk snc



32 910 sunsilk snc



32 966 sunsilk snc



32 939 sunsilk snc



32 961 sunsilk snc



32 990 sunsilk snc



32 938 sunsilk snc



32 909 sunsilk snc



36 917 sunsilk snc



32 908 sunsilk snc



32 976 sunsilk snc



32 964 sunsilk snc



32 951 sunsilk snc



32 962 sunsilk snc



32 975 sunsilk snc



32 967 sunsilk snc



32 920 sunsilk snc

*collection*



32 963 sunsilk snc



32 903 sunsilk snc



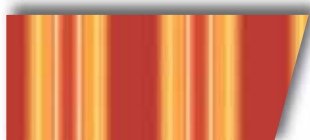
32 956 sunsilk snc



32 965 sunsilk snc



32 947 sunsilk snc



32 985 sunsilk snc



32 977 sunsilk snc



32 904 sunsilk snc



32 923 sunsilk snc



32 936 sunsilk snc



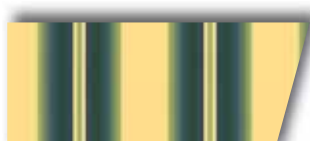
32 922 sunsilk snc



32 959 sunsilk snc



32 946 sunsilk snc

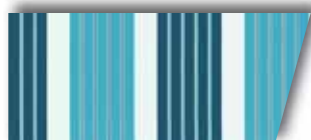


32 919 sunsilk snc

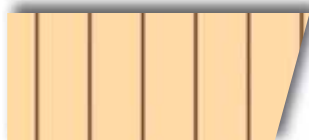
collection



32 913 sunsilk snc



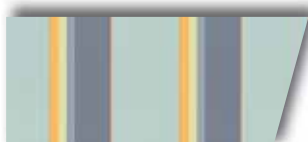
32 955 sunsilk snc



32 907 sunsilk snc



32 957 sunsilk snc



32 968 sunsilk snc



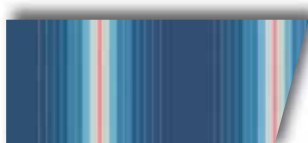
32 901 sunsilk snc



32 924 sunsilk snc



32 979 sunsilk snc



32 960 sunsilk snc



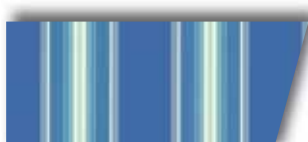
32 978 sunsilk snc



32 902 sunsilk snc



32 927 sunsilk snc



32 937 sunsilk snc



32 970 sunsilk snc



32 948 sunsilk snc



32 997 sunsilk snc



32 996 sunsilk snc



32 914 sunsilk snc



32 954 sunsilk snc



32 928 sunsilk snc



32 926 sunsilk snc

*collection*

**sunsilk snc**  
*classic*



32 931 sunsilk snc



32 992 sunsilk snc



32 991 sunsilk snc



32 933 sunsilk snc



32 934 sunsilk snc



32 930 sunsilk snc



32 932 sunsilk snc



32 995 sunsilk snc

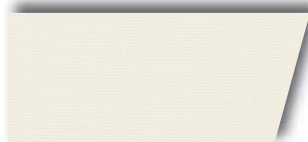


32 993 sunsilk snc



32 929 sunsilk snc

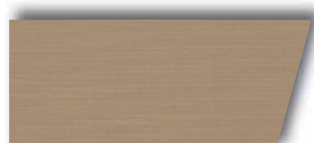
**sunsilk snc**  
*plains*



32 467 sunsilk snc



32 417 sunsilk snc



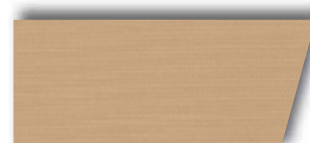
32 437 sunsilk snc



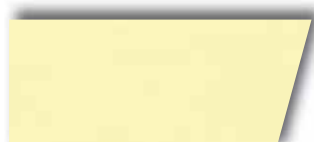
32 407 sunsilk snc



32 447 sunsilk snc



32 427 sunsilk snc



32 421 sunsilk snc



32 401 sunsilk snc



32 412 sunsilk snc



32 411 sunsilk snc



32 422 sunsilk snc



32 402 sunsilk snc



32 403 sunsilk snc



32 413 sunsilk snc



32 435 sunsilk snc



32 445 sunsilk snc



32 405 sunsilk snc



32 466 sunsilk snc



32 456 sunsilk snc



32 408 sunsilk snc



32 428 sunsilk snc



32 418 sunsilk snc

## collection



## acrylic fabrics

### Awning fabrics made from spun-dyed acrylic material in proven quality

Harmony in shape and colour creating flowing transitions. This is how modern living areas are designed - today - both inside and out - furniture and fittings, conservatory and patio are matched to one another with great care.

As the light under an awning influences the perceived atmosphere of any adjoining rooms. The ingenious colour schemes and patterns of the current markilux fabric collection are intended to reflect stylistic elements of today's home furnishing trends resulting in a coordinated overall effect in adjoining living areas.

Our awning fabrics made of acrylic fibres are designed especially for outdoor use. They are extremely tear resistant, ultra colour fast (achieving a value of 7 to 8 according to ISO 105/B 02 for both plains and stripes), weather resistant (achieving a value of 7 to 8 according to ISO 105/B 04 for both plains and stripes) and impervious to decay. Thanks to the high quality SFC coating (Teflon) they repel dirt, grease, oil and water while remaining permeable to air.



*The actual fabric colours may differ slightly from those depicted.*

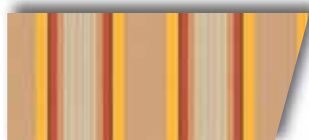
collection



34 671 acrylic



34 735 acrylic



34 701 acrylic



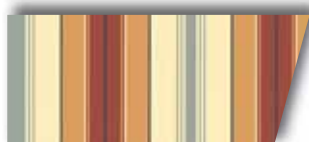
34 702 acrylic



34 451 acrylic



34 646 acrylic



34 623 acrylic



34 716 acrylic



34 614 acrylic



34 601 acrylic



34 453 acrylic



34 727 acrylic



34 562 acrylic



34 568 acrylic



34 624 acrylic



34 452 acrylic



34 538 acrylic



34 534 acrylic



34 672 acrylic



34 542 acrylic



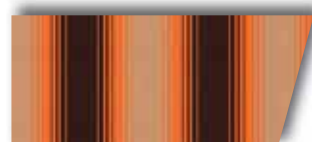
34 511 acrylic



34 575 acrylic



34 632 acrylic



34 662 acrylic



34 446 acrylic



34 439 acrylic

collection



34 683 acrylic



34 424 acrylic



34 456 acrylic



34 507 acrylic



34 666 acrylic



34 610 acrylic



34 566 acrylic



34 611 acrylic



34 563 acrylic



34 510 acrylic



34 686 acrylic



34 758 acrylic



34 723 acrylic



34 626 acrylic



34 674 acrylic



34 426 acrylic

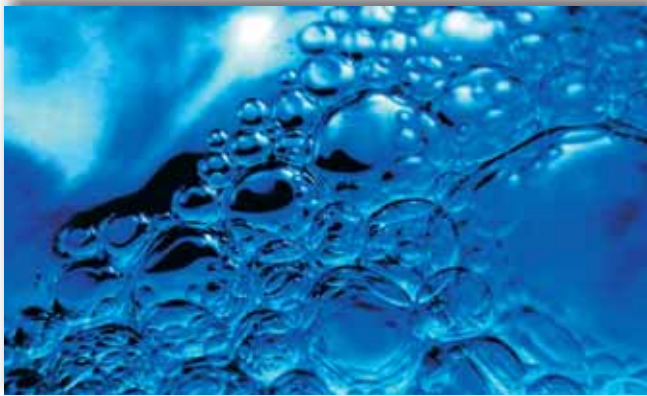


34 454 acrylic

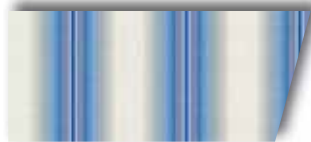


34 673 acrylic

*collection*



34 675 acrylic



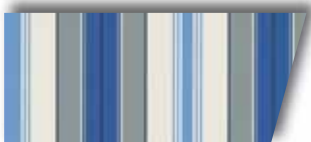
34 553 acrylic



34 560 acrylic



34 751 acrylic



34 625 acrylic



34 423 acrylic



34 515 acrylic



34 425 acrylic



34 714 acrylic



34 455 acrylic



34 427 acrylic



34 543 acrylic

**acrylic fabrics**  
*classic*



34 108 acrylic



34 121 acrylic



34 107 acrylic



34 138 acrylic



34 122 acrylic



34 112 acrylic



34 172 acrylic



34 102 acrylic



34 105 acrylic



34 179 acrylic



34 113 acrylic



34 104 acrylic



34 173 acrylic

collection

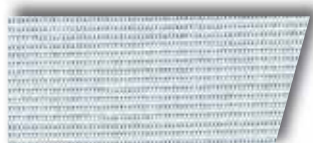
acrylic fabrics  
plains



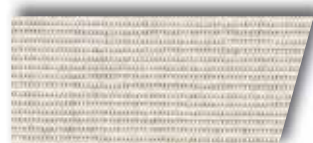
34 201 acrylic



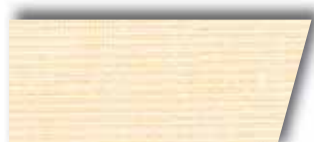
34 219 acrylic



34 275 acrylic



34 277 acrylic



34 271 acrylic



34 220 acrylic



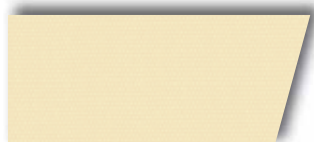
34 217 acrylic



34 218 acrylic



34 221 acrylic



34 252 acrylic



34 372 acrylic



34 241 acrylic



34 371 acrylic



34 381 acrylic



34 209 acrylic



34 348 acrylic



34 228 acrylic



34 232 acrylic



34 224 acrylic



34 226 acrylic



34 256 acrylic



34 257 acrylic



34 244 acrylic



34 227 acrylic



34 213 acrylic



34 345 acrylic



34 214 acrylic



34 225 acrylic



34 291 acrylic



34 205 acrylic



34 265 acrylic



34 249 acrylic

## Braid colours and valance shapes

Every fabric pattern has a matching braid colour assigned to it. However, should you wish another braid colour, the range shown below is at your disposal. The valance always has the same seam arrangement as the cover, as they are both cut from the same piece of material. The shape of the valance is symmetrical at both ends. Moreover the crests and troughs of the valance are adjusted to correspond to the widths of the stripes in the pattern. We cannot guarantee that this will be true of valances supplied at a later date.



298 01



298 21



298 28



298 39



292 11



298 10



298 32



298 24



298 26



298 56



298 86



298 27



298 42



298 66



292 46



298 30



298 14



298 25



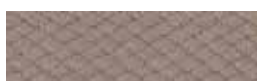
298 91



298 41



298 23



292 87



298 38



298 48



298 47



298 33



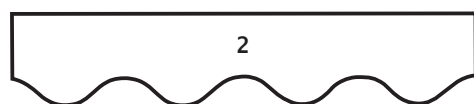
298 65



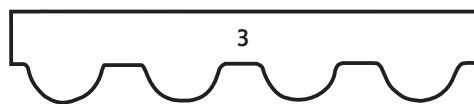
298 49



1



2



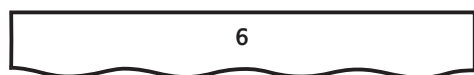
3



4



5



6

For the standard valance shapes please refer to the table of configuration possibilities of the awning in question. Special valance shapes at the surcharge stated in the current pricelist.

## collection

# perfortex

The special fabric for conservatory awnings made from spun-dyed acrylic material in proven quality and the highest possible light and weather resistance values. The light and air-permeable fabric woven using a special technique is pleasantly transparent and reduces the possibility of water troughs forming, which could put extra strain on the cover.

Thanks to the high quality SFC coating (Teflon) they repel dirt, grease, oil and water while remaining permeable to air.



When used on the markilux 8000 and 8500 the fabric is stabilised additionally by double-stitching an extra seam every 60cm. Covers for the markilux 780 and 880 are made from panels 120cm wide.

**perfortex** offers a number of advantages when used on conservatory awnings:

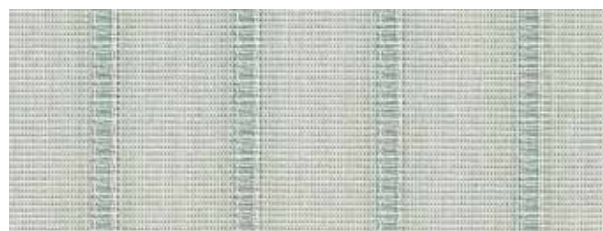
- made from a brand name of spun-dyed acrylic yarns - for the highest light fastness values
- dirt-repellent Teflon coating
- woven using a special technique which allows light, air and water to pass through, thereby reducing the possibility of the formation of water troughs, which could put extra strain on the cover and the conservatory.
- in just the right range of colours



33 311



33 320



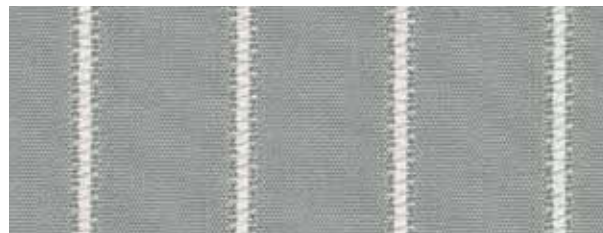
33 309



33 318



33 338



33 339

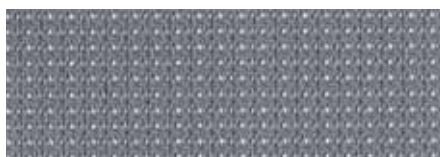
## transilk

A specially dyed, light-fast polyester fabric with extremely high tensile strength and UV stability thanks to a unique UV absorber. Apart from the high weather fastness transilk is flame retardant in accordance with M1 non feu (F)/classe 1 (I)/BS 5867 (GB). The Teflon coating of the fabric provides a dirt, water and oil-repellent finish. We recommend this light, air and water permeable fabric be used on vertical blinds, drop-arm awnings and marquisolettes.

Thanks to the high quality SFC coating (Teflon) they repel dirt, grease, oil and water while remaining permeable to air.



31 908\*



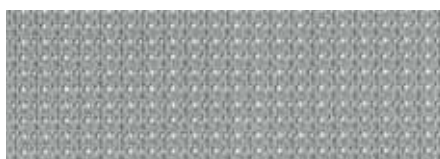
31 918



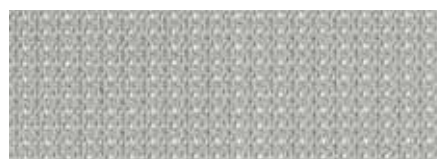
31 907\*



31 917



31 928



31 938



31 927



31 937



31 958



31 919



31 909



31 901



31 911



31 902



31 912



31 906\*



31 905\*



31 903\*

\* Colours, which - on the basis of their light transmittance values - are suitable for computer workplaces.

## frame colours

...for those what want to bring some colour into their lives  
- coloured frames, powder coated

markilux	frame colours									
	RAL 9016	RAL 9006	RAL 1015	RAL 8019	5204	5215	5233	non-standard RAL	stainless steel	5206
ES-1	—	—	—	—	—	—	—	—	•	—
ES-X	—	—	—	—	—	—	—	—	•*	—
6000	•	—	—	—	○	○	○	○	—	—
5010	•	•	•	•	○	○	○	○	—	—
3300 / 3300 pur	•	•	—	•	—	—	—	○	—	—
990	•	•	—	•	○	○	○	○	—	—
1200 / 1200 stretch	•	•	—	•	—	—	—	○	—	—
1500 / 1550	•	•	•	•	○	○	○	○	—	—
1600 / 1600 stretch	•	•	•	•	○	○	○	○	—	—
1600 skylife 2	•	•	•	•	○	○	○	○	—	—
930 swing	•	•	—	—	•	—	—	○	—	—
1000 / 1000 stretch	•	•	—	—	•	—	—	○	—	—
1100	•	•	•	•	—	—	—	○	—	—
1300 / 1300 stretch	•	•	•	•	—	—	—	○	—	—

- \* folding arms, torque bar and fixture brackets are in nano grey metallic 5206 as standard
- available as standard (standard colour)
- optionally available (longer lead time and surcharge as stated in the pricelist)
- not available



Traffic white  
RAL 9016



metallic aluminium  
RAL 9006



light ivory  
RAL 1015



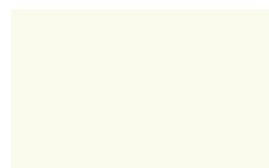
grey brown  
RAL 8019



nano anthracite metallic 5204



Nano stone grey metallic 5215



Nano off-white 5233



nano grey metallic 5206

*The actual fabric colours may differ slightly from those depicted.*

## Notes with regard to the quality of powder coating

A number of colour combinations are available for the markilux 1000, 1000 stretch, 1500, 1550, 1600, 1600 stretch and 1600 pavilion 2 without surcharge.

For the markilux 6000, 5010 and 990 different style lines are available according to the surcharges stated in our pricelist.

**Possible combinations can be found under the section for that specific awning.**

The material for the standard colours shown in the matrix above (available as standard) is in stock.

**Short delivery times, price = basic price in the price list.**

All other RAL colours including metallic, matt and fluorescing colours as well as pearl finishes are available on request. The exceptions to this rule form the markilux ES-1 and markilux ES-X made of stainless steel.

**Prolonged lead times; Prices on request or can be found in the pricelist**

When ordering fixture brackets or components please replace the dot in the part no. with the relevant number that refers to the colour in which you wish to receive them:

RAL 9016	3
RAL 8019	2
RAL 9006	5
RAL 1015	4
5204	6
5206	7

Standard polyester powder coating carried out in line with the GISCS (the German Industrial Standard for Component Surfaces) has proven itself admirably over the past 30 years in the climate of central Europe!

If greater demands are to be placed on it e.g. in coastal areas or in places where there is strong industrial pollution, it is recommended that - to improve the resistance to or even prevent the formation of hairline/crazed corrosion - a suitable chemical pretreatment be used. To this end the GISCS has developed over many years an alternative coating process. Aluminium components, for example, are pre-anodised in advance of the actual powder coating process. This present stage in technological development has shown that this represents a considerable improvement in the prevention of hairline/crazed corrosion caused by the conditions cited above.

This method is describe in summary in the quality and testing rules for the coating of component parts made of aluminium, under RAL-RG 631 and of steel under RAL-GZ 663.

In situations such as those cited above we give the option of having the powder coating carried out in line with RAL RG 631 or RAL GZ 663. The lead time is the same as that for non-standard RAL colours. The additional cost of this finish varies according to the awning type i.e. the surface area to be treated. This will be given to you on request. For quick, non-binding quotations the following rule of thumb may be used:

Surcharges	
for standard RAL colours	x a factor of 2 minimum surcharge € 80
for non-standard RAL colours	x a factor of 2.3 minimum surcharge € 150

**Please pass your order to us with the additional comment: Powder coating with increased corrosion protection and put an appropriate cross in the order form.**